



HEALTHCARE CONSTRUCTION & FACILITY *MAINTENANCE*

Indoor air quality products with industry-leading quality, performance and reliability.

For more than 30 years companies across the globe have relied on Abatement Technologies® for portable HEPA filtration systems, dust containment solutions and other indoor air quality products with industry-leading quality, performance and reliability.



About Abatement Technologies®

Infection control and reducing healthcare associated infections (HAIs) have become a central concern in hospital construction environments. Abatement Technologies® specializes in assisting with dust control (ICRA) requirements for healthcare construction and renovation. Our highly trained and experienced staff can assist you in making the best product selections customized for the needs of your project.

Table of Contents

PREDATOR® and HEPA-AIRE® Portable Air Scrubbers	3-5
PREDATOR® and HEPA-AIRE® Replacement Filters and Accessories Chart	5
BULLDOG® and HEPA-AIRE® Negative Air Machines	6
AIRE GUARDIAN® SHIELD Containment Barriers	7-10
Containment Products	11-13
Environmental Monitors	14
Portable HEPA Vacuums	15
ICRA Packages for Mobile Containment	16
Commercial Drying Equipment	17
Consumables and Personal Protective Equipment (PPE)	18-19

US: 800-634-9091 • CANADA: 800-827-6443 • WWW.ABATEMENT.CA



PREDATOR® and HEPA-AIRE® Portable Air Scrubbers

Abatement Technologies® developed the original portable air scrubber more than 20 years ago and our products continue to set the standard for quality, performance, portability, reliability and ease of use.

All models feature:

- UL-compliant pre-filters with high particulate holding capacity for longer filter life
- True non-electrostatic HEPA filters tested and certified to provide 99.97% or higher efficiency overall against 0.3-micron particles
- Optional VAPOR-LOCK® high capacity carbon filters for gas/odour adsorption (sold separately)
- High-performance motors and high-efficiency backward curved blowers for better airflow as filters load with particulate
- Recessed control panels for component protection
- Nationally Recognized Testing Laboratory (NRTL) certification to applicable UL and CSA safety standards

PREDATOR® models feature ultra-tough and easy to clean rotational-molded polymer housings made from a flame-retardant resin with EPA-registered microbial growth and UV inhibitors.



PART NO: PRED750

PREDATOR® 750 Portable Air Scrubber

- Airflow: Variable speed airflow, rated 200 CFM - 750 CFM
- 6 air changes per hour (ACH) for max. 7,500 cubic foot spaces
- Weight: 35 pounds with filters
- Peak power draw: 1.9 amps or less, daisy-chain up to 5 units per 15A circuit up to 3750 cfm
- Controls: Variable speed switch; green “unit on” and amber “change filter” indicator lamps; 25’ power cord; GFCI-protected receptacles (2)
- 3 standard filtration stages: 1” MERV 4 natural fiber filter, 2” MERV 8 pleated filter and HEPA filter
- Optional pre-filter: 2” 500gsm or 150gsm VAPOR-LOCK® carbon filter (replaces standard stage 2 pre-filter)
- Ideal for use with AIRE GUARDIAN® 3000 Mobile Containment Cube (AG3000MCK)
- Stackable up to 3 units



PART NO: PRED1200 / PRED1200UV

PREDATOR® 1200 Portable Air Scrubber

- Airflow: Variable speed, rated 300 CFM - 900 CFM
- 6 air changes per hour (ACH) for max. 9,000 cubic foot spaces
- Weight: 70 pounds with filters
- Upright model with non-marking 8” rear wheels and front swivel casters
- Peak power draw: 3.5 amps or less, daisy-chain up to 3 units per 15A circuit up to 2700 CFM
- Controls: Variable speed switch; “unit on”, “change pre-filter” and “change HEPA” indicator lamps; hour meter; GFCI-protected receptacles (2)
- 3 standard filtration stages: 1” MERV 4 natural fiber filter, 2” MERV 8 pleated filter and HEPA filter
- Optional pre-filter: 2” 500gsm or 150gsm VAPOR-LOCK® carbon filter (adds 4th filtration stage)
- Also available with built-in UV (PRED1200UV)
- The PRED1200UV combines the bacteria-killing power of germicidal UV technology with the air-cleaning performance of HEPA filtration (PRED1200UV)



PREDATOR® and HEPA-AIRE® Portable Air Scrubbers

HEPA-AIRE® models feature tough, corrosion resistant metal cabinets fabricated using airtight and watertight “zero bypass” rivet construction.



PART NO: PAS750

HEPA-AIRE® 750 Portable Air Scrubber

- Airflow: Variable speed, rated 200 CFM – 750 CFM
- 6 air changes per hour (ACH) for max. 7,500 cubic foot spaces
- Weight: 33.5 pounds with filters
- Cabinet: Anodized aluminum
- Peak power draw: 1.9 amps or less, daisy-chain up to 5 units per 15A circuit
- Controls: Variable speed control switch; power “on” lamp; hour meter; “change filter” lamp; and GFCI-protected receptacles
- 3 standard filtration stages: 1” MERV 4 natural fiber filter, 2” MERV 8 pleated filter and HEPA filter
- Optional pre-filter: 2” 500gsm or 150gsm VAPOR-LOCK® carbon filter (replaces standard stage 2 pre-filter)
- Ideal for use with the AIRE GUARDIAN® AG8000 Mobile Containment Cart
- Stackable up to 3 units



PART NO: PAS1200 / PAS1200UV

HEPA-AIRE® 1200 Portable Air Scrubber

- Airflow: Variable speed, rated 300 CFM - 900 CFM
- 6 air changes per hour (ACH) for max. 9,000 cubic foot spaces
- Weight: 85 pounds with filters
- Upright model, with non-marking 8” rear wheels and front swivel casters
- Cabinet: Stainless steel
- Peak power draw: 3.5 amps or less, daisy-chain up to 3 units per 15A circuit up to 2700 CFM
- Controls: unit on, change pre-filter, and change HEPA LIGHTS; variable speed control switch; hour meter; and GFCI-protected receptacles (2)
- 3 standard filtration stages: 1” MERV 4 natural fiber filter, 2” MERV 8 pleated filter and HEPA filter
- Optional pre-filter: 2” 500gsm or 150gsm VAPOR-LOCK® carbon filter (adds 4th filtration stage)
- The PAS1200UV combines the bacteria-killing power of germicidal UV technology with the air-cleaning performance of HEPA filtration



PART NO: PAS1700

HEPA-AIRE® Portable Air Scrubber PAS1700

- Maximum rated airflow as high as 1650 CFM
- Weight: 88 pounds with filters
- Anodized aluminum cabinet is lightweight and resistant to corrosion and scratching
- Hour meter measures length of time during operation
- Filter change indicator light included
- Easy-opening prefilter door swings down, HEPA Filter door swings up, both close with a secure cam latch and a gasket to protect against filter by-pass
- The PAS1700 has been independently tested and certified in accordance with applicable UL and CSA safety requirements



PART NO: PAS2400

HEPA-AIRE® 2400 Ultra-High Performance Portable Air Scrubber

- Our most popular and versatile portable air scrubber
- Airflow: Two speed, rated 700 CFM (low)/ 2,100 CFM (high), the highest performance 120V/15A air scrubber available
- 6 Air changes per hour (ACH) for max. 21,000 cubic foot spaces
- Weight: 170 pounds with filters
- Cabinet: Stainless steel, with detachable top module
- Peak power draw: 12 amps or less
- 3 standard filtration stages: 1" MERV 4 natural fiber filter, 2" MERV 8 pleated filter and HEPA filter
- Optional pre-filter: 2" 750gsm VAPOR-LOCK® carbon filter (adds 4th filtration stage)



PART NO: PAS5000

HEPA-AIRE® 5000 High Performance Portable Air Scrubber

- Airflow: One speed, rated 4,000 CFM, the highest performance air scrubber available
- 6 air changes per hour (ACH) for max. 40,000 cubic foot spaces
- Weight: 332 pounds with filters
- Cabinet: Galvanized 20 gauge steel
- Peak power draw: 23 amps or less on a 230V/30A/60Hz electric supply
- 2 standard filtration stages (2 of each filter required): 2" MERV 8 pleated pre-filters and HEPA filters
- Optional pre-filters (2 required): 2", 1000gsm VAPOR-LOCK® carbon filters (replace standard pre-filters)



PREDATOR® and HEPA-AIRE® Replacement Filters and Accessories Chart

FILTER OR ACCESSORY	PRED750	PRED1200/UV	PAS750	PAS1200/UV	PAS1700	PAS2400	PAS5000
Stage 1: Large Particle Filter	F621	F621	F621	F621	F621	F1821	H2001 (2)
Stage 2: MERV 8 Pleated Particle Filter	H502	H502/H502UVR	H502	H502	H502	H1902	H2002 (2)
500+ Gm VAPOR-LOCK® Carbon	VL1002	VL1002	VL1002	VL1002	VL1002	VL2002	VL2024 (2)
Final Stage: 99.97% HEPA Filter	H161606-99	H610C-99	H161606-99	H610C-99	H1210C-99	H2418-99	H242406-99 (2)
UV Lamp	N/A	UV-415	N/A	UV-415	N/A	N/A	N/A
Lay Flat Outlet Ducting, 500' Roll	H2015-10	H2015-10	H2015-10	H2015-10	H2015-12	H2015-12	N/A
Black Wire-Reinforced Mylar, 25'	H2020-10	H2020-10	H2020-10	H2020-10	H2020-12	H2020-12	N/A
Hvy Duty Wire-Reinforced PVC	H2030-10	H2030-10	H2030-10	H2030-10	H2030-12	H2030-12	**H2030-12 (2) / H2030-14 (1)
Flex Duct Attachment Clamp (Intake)	H2350-10	H2350-10	H2350-10	H2350-10	H2350-12	H2350-12	H2350-12 (2)
Flex Duct Attachment Clamp (Exhaust)	H2350-10	H2350-10	H2350-10	H2350-10	H2350-12	H2350-12	H2350-14 (1)

* Blue items come with the base unit. All others must be purchased separately

** PAS5000 Hvy Duty Wire-Reinforced PVC: Intake:H2030-12 (2 ea) and Exhaust H2030-14 (1 ea)



Negative Air Machines



PART NO: BD2KM & BD2KMA

BULLDOG® Durable Polymer Body Negative Air Machines

- Airflow: Two Speed, rated 1,300 CFM (low) / 2,000 CFM (high)
- 6 Air changes per hour (ACH) for max. 20,000 cubic foot spaces
- Weight: 117 pounds with filters
- Cabinet: Durable polymer plastic
- Peak power draw: 10 amps
- Filtration: 3 stage with “Filter Change” indicator light
- HEPA: Individually tested to at least 99.97% @ 0.3 microns
- Casters: 2 Swivel Locking, 2 Fixed
- BD2KMA Features: 5” Pressure Gauge & Audio “Change Filter” Alarm



PART NO: H1990M

HEPA-AIRE® Galvanized Steel Negative Air Machines

- Airflow: Two Speed, rated 1,050 CFM (low) / 1,600 CFM (high)
- 6 Air changes per hour (ACH) for max. 16,000 cubic foot spaces
- Weight: 125 pounds with filters
- Cabinet: Galvanized 20 gauge steel
- Peak power draw: 9 amps
- Filtration: 3 stage with “Filter Change” indicator light
- HEPA: Individually tested to at least 99.97% @ 0.3 microns
- Casters: 2 swivel locking, 2 fixed



PART NO: H2KM & H2KMA

HEPA-AIRE® Galvanized Steel Negative Air Machines

- Airflow: Two Speed, rated 1,300 CFM (low) / 2,000 CFM (high)
- 6 Air changes per hour (ACH) for max. 20,000 cubic foot spaces
- Weight: 124 pounds with filters
- Cabinet: 20 gauge galvanized steel
- Peak power draw: 10 amps
- Filtration: 3 stage with “Filter Change” indicator light
- HEPA: Individually tested to at least 99.97% @ 0.3 microns
- Casters: 2 swivel locking, 2 fixed
- H2KMA Features: 5” pressure gauge & audio “Change Filter” alarm



Replacement Filters & Accessories Chart

FILTER OR ACCESSORY	BD2KM / BD2KMA	H2KM / H2KMA	H1990M
Stage 1: Large Particle Filter	H2001	H2001	H1901
Stage 2: Merv 8 Pleated Particle Filter	H2002	H2002	H1902
Final Stage: 99.97% HEPA Filter	H242406-99	H242406-99	H1910M
Optional 3rd Stage Vapor-Lock® Pleated Carbon Filter	VL2024	VL2024	VL2002
Optional Inlet Manifold	H2080P	H2080P	H1980P



Containment Barriers

for CSA, CDC and ICRA Guideline Compliance



AIRE GUARDIAN® SHIELD

THE BETTER WAY TO CREATE CONTAINMENT

The AIRE GUARDIAN® SHIELD is a modular wall system designed to contain airborne contaminants while performing construction or renovation work. The wall system can also be used as a patient isolation area or clean room to help prevent airborne contaminants from entering. When used properly in conjunction with an Abatement Technologies Portable Air Scrubber, the AIRE GUARDIAN® SHIELD maintains negative or positive pressure differentials. Additionally, the AIRE GUARDIAN® SHIELD can be used to build an anteroom to allow passage between rooms while maintaining negative pressure differentials.

Containing a construction space can be costly and complicated. The AIRE GUARDIAN® Shield provides a quick, easy, single tool, and virtually dust-free solution to simplify the containment process in even the most sensitive areas.

- Exceeds ICRA Class 4 requirements
- Premier temporary containment solution
- Helps to reduce or eliminate future containment costs
- System may pay for itself in as little as 3-5 uses



FAST SET UP



ADAPTABLE



ATTRACTIVE CONTAINMENT



EASY DECON



REUSABLE



SECURE



CLASS A FIRE AND SMOKE



UP TO ICRA CLASS IV



AG SHIELD Panels



- 4 standard panel sizes 1', 2', 3', 4'
- Tool-less height adjustment from 7' to 10' 3"
- Lightweight aluminum and polycarbonate construction
- Smooth, clean exterior surfaces
- Standard panels are translucent
- Clear panels are special order

PART NUMBERS:
AGSHIELD-P12W
AGSHIELD-P36W

AGSHIELD-P24W
AGSHIELD-P48W

Flame/Smoke
Ratings



AG SHIELD Doors



- Universal Doors swing in and out and may be hung left or right
- Available in 2 widths, 32" or 44"
- Standard Key locking lever style handle & door closer included
- Sliding door is 42"W set in a 48"W panel & includes a SCHLAGE® digital keypad

PART NUMBERS:
AGSHIELD-D32WK
AGSHIELD-D32WPK
AGSHIELD-DS42WK

AGSHIELD-D44WK
AGSHIELD-D44WPK



AG SHIELD Corners



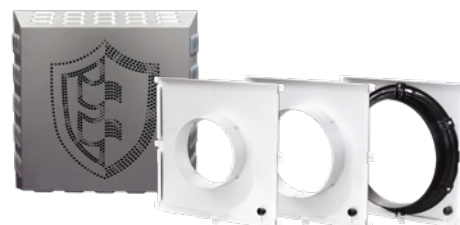
- 2 corner types
- The flexible hinged universal corner has a maximum swing to 150° sweep outward and 105° sweep inward.
- 90° fixed inward

PART NUMBERS:
AGSHIELD-CFI

AGSHIELD-CHU



AG SHIELD Exhaust System



- Tool-less adapter plate changes
- Optional exhaust kit allows for installation in any location on a panel
- 3 optional drop in exhaust ports with 8", 10", and 12" collars
- Exhaust/Intake plate with diffuser & 2" pleated filter

PART NUMBERS:
AGSHIELD-EXD
AGSHIELD-EX08

AGSHIELD-EP24W
AGSHIELD-EX10

AGSHIELD-EXK
AGSHIELD-EX12



PART NUMBER:
AGSHIELD-TO



PART NUMBER:
AGSHIELD-TI

AG SHIELD T-Connections

T-Connection Outward

Creates an intersection in a wall allowing you to T-off that wall 90° with another panel.

T-Connection Inward

Creates an intersection in a wall allowing you to T-off that wall 90° with another panel.

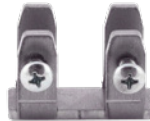
AG SHIELD Hardware Connectors

All necessary connectors are included with panels. Additional connectors can be purchased using the part numbers listed below, sold in packages of 10.

- 10 p/k
- Attaches to panels



SHIMS
PART NUMBER:
AGSHIELD-HWS30



FLOOR BRACKET
PART NUMBER:
AGSHIELD-HWFB10



CEILING BRACKET
PART NUMBER:
AGSHIELD-HWCG10



PANEL CLAMP
PART NUMBER:
AGSHIELD-HDWPC10



DRYWALL BRACKET
PART NUMBER:
AGSHIELD-HWCD10

AG SHIELD Accessories



PORTABLE PRESSURE MONITOR
HANGER BRACKET
PART NUMBER:
AGSHIELD-HWPM1



ROOM PRESSURE MONITOR
HANGER BRACKET
PART NUMBER:
AGSHIELD-HWPM2



TRANSPORTATION CART
PART NUMBER:
AGSHIELD-CART2



WINDOW KIT
PART NUMBER:
AGSHIELD-WK

Transportation Cart

Transportation cart for AG SHIELD® components. Designed to hold up to 11 panels for easy transportation and storage. The large side of the cart can carry up to a total of 8 panels of any size but no more than 4 doors at a time. The small side can carry up to 3 one-foot or two-foot panels.

Window Kit

The window kit can be installed on a panel or door before or after the wall is built. It can be installed on any 2, 3 or 4-foot panel or door in the upper panel area.

AG SHIELD PARTS LIST



STANDARD PANELS	WIDTH	MIN / MAX HEIGHT	DIMENSIONS	PART NUMBER
12" Panel	12"	84" / 123"	12"W x 84"T x 2"D	AGSHIELD-P12WK
24" Panel	24"	84" / 123"	24"W x 84"T x 2"D	AGSHIELD-P24WK
36" Panel	36"	84" / 123"	36"W x 84"T x 2"D	AGSHIELD-P36WK
48" Panel	48"	84" / 123"	48"W x 84"T x 2"D	AGSHIELD-P48WK
24" Panel, White with Exhaust Port	24"	84" / 123"	24"W x 84"T x 2"D	AGSHIELD-EP24W

DOOR PANELS	TYPE	DETAILS	PART NUMBER
44" Hinged Door	Universal Swing	In a 48" panel, key locking lever handle set and door closer	AGSHIELD-D44WK
44" Hinged Door	Universal Swing	In a 48" panel, electronic keypad and door closer	AGSHIELD-D44WPK
32" Hinged Door	Universal Swing	In a 36" panel, key locking lever handle set and door closer	AGSHIELD-D32WK
32" Hinged Door	Universal Swing	In a 36" panel, electronic keypad and door closer	AGSHIELD-D32WPK
42" Sliding Door	Sliding	Self Closing, 42" Sliding Door in a 48" White Panel	AGSHIELD-DS42WK

PANEL CORNERS	WEIGHT	DIMENSIONS	PART NUMBER
Corner, Fixed 90° Inside	14	123" / 84"	AGSHIELD-CFI
Corner, Hinged Universal	18	123" / 84"	AGSHIELD-CHU
T-Connection Outward	14	123" / 84"	AGSHIELD-TO
T-Connection Inward	14	123" / 84"	AGSHIELD-TI

EXHAUST SYSTEM INDIVIDUAL COMPONENTS	COLLAR SIZE	DIMENSIONS	PART NUMBER
Exhaust Kit, 2 Frames with Security Plate and Plastic Knob	-	16.5"W x 16.5"T x 2"D	AGSHIELD-EXK
8" Exhaust Plate	8"	15"W x 15"T x 3"D	AGSHIELD-EX08
10" Exhaust Plate	10"	15"W x 15"T x 3"D	AGSHIELD-EX10
12" Exhaust Plate	12"	15"W x 15"T x 3"D	AGSHIELD-EX12
Exhaust / Intake Plate with Diffuser and 2" Pleated Filter	-	20"W x 20"T x 3"D	AGSHIELD-EXD

PRESSURE MONITORS	PART NUMBER	BRACKET PART NUMBER
Portable Pressure Monitor	PPM3-S	AGSHIELD-HWPM1
Room Pressure Monitor	RPM-RT1 / RPM-RT2	AGSHIELD-HWPM2

HARDWARE AND CONNECTORS	PART NUMBER	OTHER ACCESSORIES	PART NUMBER
Panel Clamps, 10/PK	AGSHIELD-HWPC10	Window Kit	AGSHIELD-WK
Ceiling Brackets, 10/PK	AGSHIELD-HWCG10	Wall Seal 3" Extended, Metal with Foam - L & R	AGSHIELD-WSE3
Shims, 30/PK	AGSHIELD-HWS30	Wall Seal Kit, Extended - For Drywall	AGSHIELD-WSED
Panel Brackets with Floor Mount	AGSHIELD-HWFB10	Transport Cart	AGSHIELD-CART2
Drywall Ceiling Brackets	AGSHIELD-HWCD10	Closed Cell Gasket, 8ft length	TAPE46
Panel Brackets - Upper and Lower, 10/PK	AGSHIELD-HWPB10		



Containment Products for CDC & ICRA Guideline Compliance



PART NO: AG8000PAS-RPM WITH TOP EXTENSION
AG8000-EXT24 [NOT INCLUDED]

AIRE GUARDIAN® 8000 Mobile Containment Cart

- Tough hard sided cart effectively contains dust particles during ceiling access work
- Height adjusts with a power drill or hand crank for single-handed header extension and retraction to ceiling heights just over 10'
- Collapsed 77.5" fully extended 122"
- 16', 3-section fiberglass extension ladder included
- Recessed floor pockets and built-in ladder bracket accept and secure ladder in place
- Cart features easy to clean anodized aluminum frame with clear polycarbonate walls and has a 900 lb load rating
- Cart exhaust port is designed specifically for the Abatement Technologies PAS750 model air scrubber (optional) and provides HEPA efficient negative air containment for ICRA compliance
- Optional equipment includes: PAS750 portable air scrubber; AG-CADDY cart and RPM-RT1 differential room pressure monitor
- AG8000-PAS (Includes PAS750 Portable Air Scrubber)
- AG8000PAS-RPM (Includes PAS750 Portable Air Scrubber and RPM-RT1 pressure monitor)
- Maximum working ceiling height 10'2" (with AG8000-EXT24 12'4") and increases the surface workspace within the confines of the top by an additional 5' sq.ft
- Wider and Taller coverage with the optional AG8000 Extension



OUR UNIQUE RIGID UPPER STRUCTURE SUPPORTS THE LADDER AT THE CEILING HEIGHT PROVIDING UNMATCHED REACH AND LADDER SAFETY WHILE WORKING ABOVE THE DROP CEILING.



Containment Products for CSA, CDC and ICRA Compliance

AIRE GUARDIAN® 3000 Mobile Containment Cube

- Durable enclosure effectively contains dust particles during ceiling and wall access work
- Meets Relevant CDC, CSA Z317 13-03, AIA, ASHE & NFPA 701 Life Safety Code Requirements
- Fire Rated to Federal Std. No. 191A, Test Method 5903, MVSS 320, CA State Fire Marshall
- Easy to adjust upright poles with numbered settings
- Precise adjustment to any ceiling height up to 10'
- Large top zippers for full above-ceiling access
- Air Scrubber & HEPA vacuum connection ports
- 4 clear plastic windows, 1 on each side for visibility
- 3 large zippered entry/exit doors on 3 sides



*PRED750 and AG-CADDY cart not included

PART NO: AG3000MCKK





Containment Products for CDC & ICRA Guideline Compliance

ICRA Compliance Packages

Temporary, Reusable, Adaptable Modular Containment Kit



Optional transport cart is available to purchase

Our anteroom starter packages have all of the resources you need to secure construction and renovation projects in healthcare facilities. The AIRE GUARDIAN® SHIELD by ABATEMENT TECHNOLOGIES® is a new modular temporary containment barrier system consisting of simple-to-connect panels and doors and is deployable in minutes. The system is lightweight, reusable and has a clean and professional appearance. You can quickly erect an 8'W x 2'D anteroom with these package components and then purchase additional panels, doors or accessories as and when you need them on a project by project basis. The height of every panel and door is adjustable from 7' to 10'3". Special order clear panels and mixed combinations of clear and translucent panels are available, inquire for more details.

Four Anteroom Kits are available and all four kits include: a 4ft panel, a 2 ft panel, a 2 ft panel with an exhaust port and all installation hardware.

AGSHIELD-AR3 SLIDING DOOR

The AR3 anteroom kits offer a 42" sliding door set in a 48" panel, and the option to include two fixed or two flexible corners.

AGSHIELD-AR3 - two 90° fixed corners

AGSHIELD-AR3H - two flexible hinged corners provide a 255° range of sweep

AGSHIELD-AR2 UNIVERSAL SWING DOOR

The AR2 anteroom kits offer a 4ft universal swing door (in or out) that may be hung left or right and a choice of corners, either two fixed or two flexible.

AGSHIELD-AR2 - two 90° fixed corners

AGSHIELD-AR2H - two flexible hinged corners provide a 255° range of sweep

AIRE GUARDIAN® Transition Module

- Enclosure flange fits any 46" - 48" wide, 80" tall doorway
- Large zippered doors at either end are wide enough for a gurney
- Large view windows
- Designed for use with a HEPA-CARE® in-room HEPA filtration unit
- Tough military tent fabric meets relevant fire/life safety standards



PART NO: AG3100TMK

DOOR GUARD Reusable Barrier

- Designed to isolate construction and renovation activities in compliance with CSA, CDC and ICRA Guidelines
- Easily mounts around the perimeter of standard 80" tall x 44"- 49" wide doorways
- 2 Door Guards can be taped together to fit over double doors up to 108" wide
- Durable Fire rated 10 mil fabric conforms to: CDC ICRA Barrier Guidelines, Federal Std. No. 191A, Test Method 5903, MVSS 320, CA State Fire Marshall



PART NO: AG-DG100



PART NO: IC750MOBVC

- ICRA Package includes: 1 ea AG3000MCCK, 12 ea F621, 1 ea PRED750, 6 ea H502, 1 ea V800WD, 1 ea H2350-10, 1 ea AG-CADDY

*Note ladder not included in either package



PART NO: IC750MOBKC

- ICRA Package includes: 1 ea AG3000MCCK, 1 ea PRED750, 1 ea AG-CADDY, 12 ea F621, 6 ea H502, 1 ea H2350-10



Environmental Monitors

Pressure Monitors and Particle Counters

Wall-mounted Differential Pressure Monitor



PART NO: RPM-RT1 OR RPM-RT2

- RPM-RT1 monitors one room relative to a reference area
- RPM-RT2 monitors two rooms relative to a reference area
- Optional remote sensor measures temperature and relative humidity
- (PN: RPM-RTSENSOR)
- Colour coded screen background designates alarm status
- Audio alarm delay and timed shut off features
- Differential pressure measurement in the ranges of -0.10inWC (-25 Pa) to +0.10inWC (+25 Pa)
- View readings history onscreen or upload to a PC via a USB stick
- BACNET and N2 network capability
- Dual level password protection for operators and administrators

RPM-RT1K Kit includes: 1 ea pressure monitor, 1 ea 25ft of clear tubing, 1 ea temperature/rh sensor and 1 ea 25ft Ethernet cable

RPM-RT2K Kit includes: 1 ea pressure monitor, 2 ea 25ft of clear tubing, 2 ea temperature/rh sensors and 2 ea 25ft Ethernet cables

RPM-RT1T - Kit includes: 1 ea Pressure Monitor and 1 ea 25ft of ClearTubing 1/8in ID x 1/4in OD

RPM-RT2T - Kit includes: 1 ea Pressure Monitor and 1 ea 25ft of Clear Tubing 1/8in ID x 1/4in OD

Portable Differential Pressure Monitor



PART NO: PPM3-S

- Colour touch screen display
- Built-in visual and audible alarm system with audio alarm override
- Differential pressure measurement in the ranges of -0.10inWC (-25 Pa) to +0.10inWC (+25 Pa)
- Reading accuracy of \pm 3%
- Operating temperature range of 41°F (5° C) to 131° F (55° C)
- Optional wall mounting bracket (RPM-HANG) for security / theft protection

Handheld Laser Particle Counter



PART NO: PC501

- On screen data review or download to USB port
- Fast sampling results
- Up to 3 channels of simultaneous data
- Measure particles down to 0.3 microns
- ISO 21501-4 compliant



Portable HEPA Vacuums

Canister Style Wet/Dry HEPA Vac



PART NO: V8000WD

- Exceptional wet/dry performance: 135 CFM and 92" static lift
- Portable, compact and lightweight design: 22 lbs
- Durable polyethylene cabinet
- 1.6 HP motor
- True 99.97%+ efficiency HEPA filter
- Comes with complete toolset
- 8 GAL tank capacity
- 22' power cord
- Filters/Bags:
 - V8040-5 Fleece Filter Bag, 5/pk
 - V8042 - HEPA Filter, DRY USE ONLY, 1/ea
 - V8042-W - HEPA Filter, Wet/Dry Use, 1/ea

Canister Style Dry HEPA Vac



PART NO: GD930

- Exceptional performance: 74 CFM and 92" static lift
- Portable, compact and lightweight design: 16.5 lbs
- Sturdy chrome-plated steel container
- True 99.97%+ efficiency HEPA filter
- Toolset included
- 4 GAL tank capacity
- 32' power cord
- Filters/Bags:
 - V93040 - Replacement Bags, 10/pk
 - V930-10 - HEPA Filter, 1/ea

Backpack HEPA Vac



PART NO: GD10

- Lightweight, ergonomic design to reduce fatigue
- Powerful: 99 CFM airflow and 96" static lift
- Upstream HEPA filter rated 99.99% @ 0.3 microns
- Toolset included
- 50' power cord
- Filters/Bags:
 - V1471097500 - Dust Bag, 5/pk
 - V1471104500 - HEPA Filter, 1/ea



ICRA Packages for Mobile Containment

From years of working with healthcare contractors...

Time and cost-saving ICRA compliance packages.

These convenient kits include an air scrubber, a wet/dry HEPA vacuum, a pressure monitor, and various accessories. ICRA kits provide facilities with a prepackaged assortment of the items most commonly required for isolation of airborne construction contaminants. ICRA kits provide 6 or more ACH in containment areas as large as 5,000 to 20,000 cubic feet.

IC21000PK*/IC21000FK**



IC9000PK*/IC9000FK**



IC10000PK*/IC10000FK**



	IC21000PK*/IC21000FK**	IC9000PK*/IC9000FK**	IC10000PK*/IC10000FK**
Maximum Containment Area in Cubic Ft	21,000	9,000	9,000
Portable Air Scrubber	PAS2400	PAS1200	PRED1200
Wet/Dry Vac	V8000WD	V8000WD	V8000WD
Room Pressure Monitor Kit (Portable or Fixed, depending on Package)	Room Pressure Monitor	Room Pressure Monitor	Room Pressure Monitor
Pre-filters (1 cs)	F1821	F621	F621
Secondary Filters (1 cs)	H1902	H502	H502
Flex Duct and Locking Attachment Clamp (1 ea)	H2030-12-10 & H2350-12	H2030-12-10 & H2350-12	H2030-12-10 & H2350-12
6 Mil ICRA Awareness Barrier (1 ea)	DS-8500FR	DS-8500FR	DS-8500FR
Zipwall Adhesive Zippers (2 ea)	HCHDAZ-12	HCHDAZ-12	HCHDAZ-12
Grill Mask (1 cs) and Dispenser (1 ea)	K1-GM13 & K1-GM-DS-13	K1-GM13 & K1-GM-DS-13	K1-GM13 & K1-GM-DS-13

*PK packages contain the PPM3-S portable differential pressure monitor

**FK packages contain the RPM-RT1 room pressure monitor



Commercial Drying Equipment

DEHUMIDIFIERS

The new AQUATRAP® RS line from Abatement Technologies® delivers the same powerful structural drying power as their predecessors and now features a stackable roto-molded plastic cabinet.

AQUATRAP® AT150RS LGR Dehumidifier



- Water removal (90°F / 90% RH): 134 Pints / 63L per day
- Water removal (81°F / 60% RH): 74 Pints / 35L per day
- Water removal (50°F / 70% RH): 32 Pints / 15L per day
- Amperage: 7.5A max
- Rated air flow: 354 CFM / 600 m3/h

PART NO: AT150RS

AQUATRAP® AT250RS LGR Dehumidifier



- Water removal (90°F / 90% RH): 266 Pints / 126L per day
- Water removal (81°F / 60% RH): 147 Pints / 70L per day
- Water removal (50°F / 70% RH): 69 Pints / 33L per day
- Amperage: 13A max
- Rated air flow: 413 CFM / 700 m3/h

PART NO: AT250RS

AIR MOVERS

RAM Low Profile Air Movers



PART NO: RAM1000LP

- 2 Speed settings: High (1000CFM) and Low (700 CFM)
- Can be placed in 4 drying positions
- Onboard GFCI protects against electrical shock in damp or wet applications
- Designed to stack for easy storage
- Easy-clean, removable front grill and polyethylene housing
- Conforms to UL 507 and CSA 22.2 No. 113 standards
- Hour meter
- Resettable circuit breaker
- Weighs 20.3 lbs
- Less than 2 amps on high

RAM Centrifugal Air Movers



PART NO: RAM1000

- High velocity: 2,850 fpm @ high speed
- Air volume: 1,125 CFM @ high speed
- 2.2 amps (low speed) / 2.8 amps (high speed)
- Perfect weight balance: Weighs only 25 lbs
- 3 operating positions: Horizontal, 45 degrees and vertical



Consumables and PPE

In addition to the trusted products we make and sell, we have partnered with some of Canada's best brands to provide you with a more complete line of products to try and cover everything you do on site. Making Abatement Technologies® your single destination for quality equipment and supplies.

PERSONAL PROTECTIVE EQUIPMENT



HAND PROTECTION:

Nitrile, Rubber, Cloth and Cut Resistant Work Gloves



HEAD PROTECTION:

Certified Hard Hats and Accessories



RESPIRATORS AND FILTERS:

Full Facepiece, Half Facepiece, Particulate and Combo Filters



DISPOSABLE DUST MASKS



EYE WEAR:

Safety Glasses and Chemical Splash Goggles



FALL PROTECTION:

Harnesses, Lanyards, Self-Retracting Lifelines and Anchors



FIRST AID PRODUCTS:

Eyewash Stations, Complete First Aid Kits



DISPOSABLE PROTECTIVE CLOTHING:

Breathable, Non-Breathable Coveralls, Boot and Shoe Covers

TOOLS AND ACCESSORIES



GRILL MASK AND DISPENSERS



STICKY FLOOR MATS



AIR SCRUBBER FILTERS



TAPES



DUCTING AND CLAMPS



Consumables and PPE

Partner Brands



CONTAINMENT PRODUCTS



POLY SHEETING, CLEAR, RIP-PROOF, FIRE RETARDANT



RE-U-ZIP KIT

Self-closing magnetic barrier entryway. Kit includes 1 magnetic closer strip, 4 mounting strips and a carry case.



FLOOR PROTECTION

Hard Floor, Carpet and Reusable Floor Runners



ZIPWALL PRODUCTS:

Disposable Zippers, Spring Loaded Poles, Door Kits



POLY HANGERS AND GRABBERS



DISPOSABLE BAGS:

Asbestos and Garbage. Available in Multiple Sizes and Thicknesses

CHEMICAL PRODUCTS

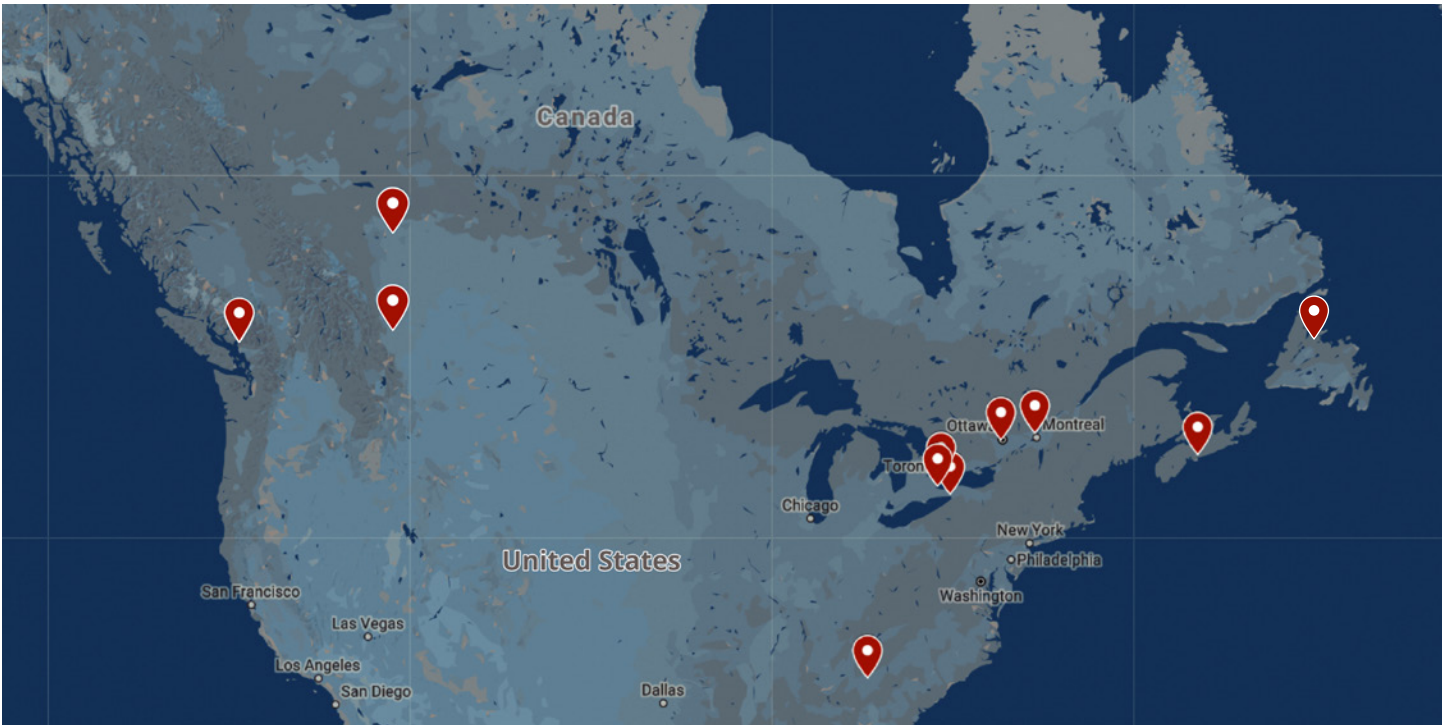


DISINFECTANTS

ADHESIVES



SPRAY GLUES



Main Offices

US
 Abatement Technologies, Inc.
 605 Satellite Blvd. Suite 300
 Suwanee, GA 30024
 U.S. 800-634-9091
 Intl. +01-678-889-4200
iaqinfo@abatement.com

Canada
 Abatement Technologies Limited
 7 High Street
 Fort Erie, ON L2A 3P6
 CAN. 800-827-6443
 Intl. +01-905-871-4720
iaqinfo@abatement.ca

Branch Offices

Vancouver
 F102-19720-94A Avenue,
 Langley BC V1M 3B7
 778-372-2611

Edmonton
 16403 - 117 Ave.
 NW Edmonton, AB T5M 3V3
 780-665-5165

Toronto
 144 Sharer Rd.
 Vaughan, ON L4L 8P4
 905-266-1322

Calgary
 F-7004 5th St. SE
 Calgary, AB T2H 2G3
 403-351-2223

Hamilton
 428 Millen Rd. Unit 10
 Stoney Creek, ON L8E 3N9
 905-664-6075

Ottawa
 51 Capital Drive
 Ottawa, ON K2G 0E7
 613-749-9667

Montreal
 1950 Bernard Lefebvre
 Laval, QC H7C 0A5
 514-375-0606

Dartmouth
 121 IIsley Ave Unit 12
 Dartmouth, NS B3B 1J1
 902-334-0900

St. John's
 5 Maverick Place
 Paradise, NL A1L 1Y8
 709-800-9020

1.800.827.6443

ABATEMENT.CA

IAQINFO@ABATEMENT.CA

Compliance With Standards and Guidelines

For the past 20 years, Abatement Technologies has provided healthcare facilities with the technology they need to comply with current infection-control standards and practices in an effective and economical manner. These include guidelines developed by The Centers for Disease Control and Prevention (CDC), Health Canada, the Canadian Standards Association (CSA), the American Institute of Architects (AIA), Department of Homeland Security HRSAs Critical Benchmark 2.2, and Joint Commission requirements.

© 2021, Abatement Technologies, Inc. All Rights Reserved. No reproduction of any portion of this advertisement is permitted without the express written permission of Abatement Technologies, Inc. All illustrations and specifications contained in this advertisement are based on the latest product information available at the time of printing. Abatement Technologies Inc. reserves the right to (1) make changes at any time, without notice, to product designs, specifications, materials, and colors, (2) to introduce new models to the marketplace and, (3) discontinue products as it sees fit.