



# DUCT CLEANING EQUIPMENT FOR **PROFESSIONALS**

High-performance air duct cleaning equipment and specialty tools

For more than 35 years, companies throughout North America have relied on Abatement Technologies® for true HEPA filtered Duct Cleaning systems. Abatement Technologies® provides HEPA filters that are individually tested and certified and pass DOP/PAO testing. Many other duct cleaning manufacturers do not adhere to these standards.



#### About Abatement Technologies

Abatement Technologies high-performance air duct cleaning equipment and specialty tools physically remove dirt, debris and other contaminants from commercial and residential ductwork systems. These exceptionally portable, HEPA-filtered air duct cleaning vacuums are designed to help duct cleaning professionals clean HVAC duct systems faster and more efficiently and to help contractors develop profitable IAQ businesses.

Our knowledgeable sales team is available to help you pick the right products and assemble a custom package for your business's needs.

Contact our Duct Cleaning Specialists with all of your questions today.

#### Export products:

Most of the Abatement Technologies electric-powered products in this brochure are available in 230 volt/50 HZ and 230 volt/60 HZ models for overseas customers. Contact our Duct Cleaning Export Sales Department for more information.

#### Table of Contents

The Advantages	3
How To Pick Your Package	4
Pick Your Package	5
Portable Power Vacuums	6-10
DUCT-PRO® Video Inspection System	11
Air Compressors	12-13
DUCT-PRO® Agitation Systems - Compressed Air Driven	14
DUCT-PRO® Tools - Compressed Air Driven	15
DUCT-PRO® Agitation Systems - Drill Driven	16
DUCT-PRO® Tools and Other Accessories	17
Commercial Drying Equipment	18
Chemicals	19
Portable HEPA Vacuums	20
CAP® Central Air Purifiers	21-23
Replacement Parts And Accessories	24-31
Contact Us	32

CANADA: 1-800-827-6443 • US: 1-800-634-9091 • ABATEMENT.CA





# The Advantages

## DUCT-PRO®

## AIRE-SWEEP®

## HEPA-AIRE®



### Leader in the Industry

Manufactured in North America for 35+ years. Well known for excellence and quality, Abatement Technologies is highly recognized in HVAC, cleaning, construction and healthcare industries.



### Best Investment: Longevity and Premium Materials

Stainless steel construction is recognized for its high strength and superior cleanability. Your investment pays for itself with years of high performance, keeping equipment and maintenance costs low.



### HEPA Filtration

Our duct cleaning vacuums conform to the NADCA requirement that any vacuum collection device which exhausts indoors must be HEPA filtered. All of our vacuums are certified and tested to 99.97% efficiency @ 0.3 microns and comply with this NADCA standard.



### Work Smarter and Maximize Productivity

The exceptional pull from our powerful vacuum motors can overcome loaded filters and reduce filter changes. Our air compressors deliver the highest PSI without the wait with continuous run features and double stage compression.



### NADCA Certified Company can Help You with Proper Cleaning Methods

NADCA certified, trained staff to offer options and advice. National Air Duct Cleaning Association is recognized by HVAC inspection, Cleaning and Restoration industries.



### Large Range of Choices to Customize your Investment

We supply a full array of professional equipment so you are ready for your job. Duct cleaning packages can be customized for commercial and residential applications.



### Valuable and Profitable

As a standalone or an added service to any HVAC or cleaning business, duct cleaning can enhance any project. IAQ discussions improve and lead to add-on sales of UV lights and air purifier options.



### Portable, Easy Transport to Access All Areas

Portable, powerful units are more affordable compared to truck mount options. Reap years of high performance from superior materials and features for on-the-job agility.



# How To Pick Your Package

## How To Assemble Your Custom Duct Cleaning Package

To make sure you can select the right package for your needs, we have developed this process to customize everything from the vacuum to the compressor, agitation devices and accessories. This gives you ultimate flexibility while still taking advantage of package savings. It's as easy as 1, 2, 3.

1

PICK YOUR VACUUM

2

PICK YOUR AIR COMPRESSOR

3

PICK YOUR ACCESSORIES



PACKAGE ORDER LIST



EXAMPLE PACKAGE

- H2500IV VACUUM
- C17GH COMPRESSOR PACKAGE
- PLATINUM ACCESSORY PACKAGE



# Pick Your Package

## 1 PICK YOUR VACUUM

H2200 ☐

H2500C ☐

H2500IV ☐

H4500IV ☐

## 2 PICK YOUR AIR COMPRESSOR PACKAGE

NO COMPRESSOR ☐

C17GH ☐

C17GK ☐

C17E ☐

## 3 PICK YOUR TOOLS AND ACCESSORIES

	<input type="checkbox"/> PLATINUM	<input type="checkbox"/> GOLD	<input type="checkbox"/> SILVER	<input type="checkbox"/> BRONZE	PART NO.	DESCRIPTION
Agitation tools	x				K3-2000A	DUCT-PRO® Power Brush System
	x	x			K3-2074	Duct Brush 6.5in x 3in
	x	x	x		C5000	DUCT-PRO® Power Rod System
		x	x	x	K3-1020	DUCT-PRO® Power Whip system 20ft
		x	x		K3-2090	DUCT-PRO® Brush Package
	x			x	K3-2072	Duct Brush 12in x 4in
				x	K3-2081	7in/ 13in/ 7in Brush
Power Vacuum accessories & filters	x	x			H2030-12-05	HD PVC Flex Duct 12ft x 5ft
			x	x	H2030-12-10	HD PVC Flex Duct 12ft x 10ft
	x	x			H2030-12	HD PVC Flex Duct 12ft x 25ft
	x	x	x	x	H2240-12K	Quick connect collar w/ 12in clamp (to plenum)
	x	x	x	x	H2250	Quick connect 12in collar (to PPV unit)
	x				H2550	Quilted cover H2500 models
	x	x	x	x	Specific Bag Filters	Power Vacuum Bag filter, qty 1
Ductwork tools	x	x	x	x	K2-VB2	Vari Bit Hole Saw
	x	x	x	x	K1-HC1	Malco Hole cutter
	x	x	x	x	K5-224	24in x 24in DUCT-PRO® Zone Bag qty 1
	x	x	x	x	K4-1000	1in hole plug pk 1,000
	x				C17-HR	Hose Reel w/50ft hose
	x	x			K1-GM8	Grillmask 8in qty 1 cs/6
	x	x			K1-GM-DS-8	Grillmask dispenser 8in
In-duct Fogger and Chemicals	x	x			K9-2600-08	Fogger w/48 in Hose
Marketing & Training Tools	x				K99-100	Res DC Brochure Pkg 100



# Portable Power Vacuums

## WHAT IS A PORTABLE POWER VACUUM (PPV)?

These HEPA-filtered systems have the power needed to place large sections of an air duct network under negative pressure, pull dislodged contaminants out of the duct system and capture them.

Abatement Technologies was the first to introduce patented Portable Power Vacuums (PPVs), making it possible for contractors to perform "within the building" source removal duct cleaning in all types of structures from homes to hospitals to commercial high-rises.

True HEPA filters with 99.97% rated efficiency or greater, ensures that only "hospital grade" pure air is released back into the building. Compared to a clumsy van or truck-mounted unit, Abatement PPVs offer exceptional flexibility and the portability needed to access and clean air handling systems on the first floor or the fifty-first floor. Abatement PPVs give you the opportunity to bid on jobs big and small.

### All models feature:

- Stainless Steel Cabinets
- Airtight Rivet Construction
- First Stage Washable Reusable Bag Filter or Particulate Filter
- Second Stage High-Efficiency Pleated Bag Filter
- Tested & Certified HEPA Filters
- Integral Transport Cart
- Operating Hour Meter
- Front Swivel Casters
- Non-Marking Wheels & Stairclimbers
- Power On Visual Indicator



HEPA-AIRE® H2500IV  
PORTABLE POWER VACUUM  
PART NO: H2500IV-ESA

High static, negative pressure air is an important step during the brush and whip cleaning in the ductwork, as the contaminants are collected in highly efficient filters and cannot re-enter the home.





# Portable Power Vacuums

## What Is INTELLIVAC®?

INTELLIVAC® is SMART electronics; a computer that controls the variable frequency drive. It eases the load and gives maximum amperage without overloading the circuit. INTELLIVAC® makes sure you are getting the right amount of current, instantaneous feedback, and correction from the computer.

### The benefits:

- Clean power going to the motor in spite of other demands on the circuit.
- Optimized circuitry to provide the greatest amount of current while balancing the load on the circuitry and the motor simultaneously.
- As filters begin to load during the cleaning process, the INTELLIVAC® compensates and continues to provide power to the drive motor, minimizing the need to change filters during cleaning jobs.
- Longer filter lifespan; you get the maximum amount of debris in the filters, which reduces filter costs.
- 3-phase performance without needing 3-phase power. 3-phase power is not readily available in residential settings. Programming inside the INTELLIVAC® system's computer creates three separate frequencies that allow for the use of a 3-phase motor on a single phase circuit. This system provides significantly more torque, less heat and smoother operation.



H2500IV INTELLIVAC® VACUUM & H4500IV INTELLIVAC® VACUUM  
PART NO: H2500IV-ESA & H4500IV-ESA

\*Available in export units H2500TF and H4500TF



# HEPA-AIRE®

## Portable Power Vacuums

1 PICK YOUR VACUUM



PART NO: H2500IV-ESA

### H2500IV INTELLIVAC® Portable Power Vacuum

Recommended for residential and commercial projects

The HEPA-AIRE® H2500IV INTELLIVAC® is the ultimate portable vacuum for residential and commercial air duct cleaning. This model includes the “SMART” electronics package with Variable Frequency Drive. A built-in transport dolly and stair climber cart (with non-marking stair belts) allow for easy transport. Site set up is as easy as moving the unit to the duct system, attaching the H2500IV inlet to the section of the building duct to be cleaned, and plugging the H2500IV into a 120v, 60 Hz, 15A or 20A circuit. By reducing the distance from the PPV to the duct system, greater vacuum power (airflow and static lift) is achieved. The H2500IV consists of four separate modules that can be separated to ease transport and set up in tight spaces. Protect the site as you leave by containing debris with transport plates (included).

Three Standard Filtration Stages:

- First: Cleanable/reusable filter (H2515B)
- Second: High-efficiency deep pleated bag filter (H8518)
- Third: True HEPA filter, certified to capture at least 99.97% of 0.3 micron particles (H2418-99)
- Controls: INTELLIVAC® AC Controller with amperage adjustment switch, hour meter, circuit amperage indicator, voltage adjustment switch, green “power on” and amber “filter change” lamps, audible filter change alarm and differential pressure gauge
- Unit Weight: 198 lbs
- Airflow: 2,700 cfm, 7.2” w.g. static
- Turn Key Kit: H2500IVK: Duct Cleaning Vac Startup pkg
  - Includes: 1 ea H2500IV, HEPA-AIRE® portable power vacuum. complete with all filters, locking clamp and power cord, 1 ea H2250 (Inlet Duct Quick Connect), 1 ea H2240-12K (12” Quick Connect Collar & Clamp), 1 ea H2030-12 (Heavy Duty PVC Flex Duct)
- Export unit available, H2500TF INTELLIVAC®, 230v 50/60 Hz. Plugless. (Or H2500TS-G, 60 Hz only, G-Plug)







# HEPA-AIRE®

## Portable Power Vacuums

1 PICK YOUR VACUUM



PART NO: H4500IV-ESA

### H4500IV INTELLIVAC® Portable Power Vacuum

Recommended for commercial and large residential projects

The dual motor/dual blower HEPA-AIRE® H4500IV Portable Power Vacuum is the most powerful unit available for commercial and industrial duct cleaning contractors. This model includes the "SMART" electronics package with Variable Frequency Drive. The four-module design and built-in transport cart allow the user to position the unit into hard to reach areas. With two separate motors and controls there is no need for 230v. Advanced electronic controls provide smooth, efficient operation using two separate 120v, 15A or 20A electrical circuits.

Three Standard Filtration Stages:

- First: Cleanable/reusable filter (H4515B)
- Second: High-efficiency deep pleated bag filter (H8520)
- Third: True HEPA filter, certified to capture at least 99.97% of 0.3 micron particles (H4520-99)
- Controls: Dual INTELLIVAC® AC Controllers with amperage adjustment switches, dual hour meters, dual circuit amperage indicators, dual voltage adjustment switches, dual green "power on" lamps, amber filter change indicator lamp, audible filter change alarm, differential pressure gauge
- Unit Weight: 285 lbs
- Airflow: 4,000 cfm, 7.2" w.g. static
- Turn Key Kit: H4500IVK: Duct Cleaning Vac Startup pkg
  - Includes: 1 ea H4500IV, HEPA-AIRE® portable power vacuum. complete with all filters, locking clamp and 2 power cords, 1 ea H2250 (Inlet Duct Quick Connect), 1 ea H2240-12K (12" Quick Connect Collar & Clamp), 1 ea H2030-12 (Heavy Duty PVC Flex Duct).
- Export unit available, H4500TF INTELLIVAC®, 230v 50/60 Hz. Plugless. (Or H4500TS-G, 60 Hz only, G-Plug)

*Note: Use airflow ratings and air changes per hour (ACH) as a guideline only. Estimates are based on factory and independent testing @ 120 VAC with an air straightener and a traverse of readings taken with a computing vane-anemometer. Actual results may vary.*





PART NO: H2500C-ESA

### H2500C Portable Power Vacuum

#### Recommended for residential projects

The HEPA-AIRE® H2500C offers a more basic and lower-priced alternative to the H2500IV while offering superior quality and unmatched performance compared to similarly equipped products. It is a great choice for companies on a more limited budget, or those looking for an additional vacuum to accommodate peak project demands. The H2500C generates a large volume of airflow to remove suspended materials from the duct. This volume is obtained using a single 115v, 12A electronic controller and a 1.5 HP motor matched with a high output blower assembly. The H2500C also features a built-in transport dolly and stair climber cart (with non-marking stair belts) that allow for easy transport. The two distinct modules can be easily separated for maneuverability on tight stairwells.

#### Three Standard Filtration Stages:

- First: Cleanable/reusable filter (H2515B)
- Second: High-efficiency deep pleated bag filter (H8516)
- Third: True HEPA filter, certified to capture at least 99.97% of 0.3 micron particles (H2418-99)
- Controls: Hour meter, green "power on" and amber "filter change" lamps
- Unit Weight: 164 LBS
- Airflow: 2,100 cfm, 5.6" w.g. static
- Turn Key Kit: H2500CK: Duct Cleaning Vac Startup pkg  
Includes: 1 ea H2500C, HEPA-AIRE® portable power vacuum. complete with all filters, locking clamp and power cord, 1 ea H2250 (Inlet Duct Quick Connect), 1 ea H2240-12K (12" Quick Connect Collar & Clamp), 1 ea H2030-12 (Heavy Duty PVC Flex Duct)



PART NO: H2200-ESA

### H2200 Portable Power Vacuum

#### Recommended for residential projects

The HEPA-AIRE® H2200 Portable Power Vacuum is Abatement Technologies' most lightweight, compact and economical high-performance vacuum in a single module system. It was developed especially for start-up businesses, entrepreneurs or anyone looking to get into the duct cleaning business with minimum capital investment. The H2200 generates a large volume of airflow to remove suspended materials from the duct. This volume is obtained by using a single 120v AC, 15A motor in combination with a high output blower assembly. The unit has two 8" non-marking rear wheels, a stair-climber assembly with roller belts, and two 360° front swivel casters.

#### Three Standard Filtration Stages:

- First: Cleanable/reusable filter (F2221)
- Second: High-efficiency deep pleated bag filter (H2255)
- Third: True HEPA filter, certified to capture at least 99.97% of 0.3 micron particles (H1210C-99)
- Controls: Hour meter, green "power on" and amber "filter change" lamps
- Unit Weight: 114 LBS
- Airflow: 1,400 cfm, 3.8" w.g. static
- Turn Key Kit: H2200K: Duct Cleaning Vac Startup pkg  
Includes: 1 ea H2200, HEPA-AIRE® portable power vacuum. complete with all filters, locking clamp and power cord, 1 ea H2250 (Inlet Duct Quick Connect), 1 ea H2240-12K (12" Quick-Connect Collar & Clamp), 1 ea H2030-12 (Heavy Duty PVC Flex Duct)



# DUCT-PRO® Video Inspection System



## IS9000 Video Inspection System

Introducing the IS9000 DUCT-PRO® Video Inspection System from Abatement Technologies, the leader in portable duct cleaning products. Accurately determine contamination levels, sources of airflow problems and necessary duct repairs. Images can be saved to an SD card and downloaded to a computer for viewing. This high-tech tool will pay for itself quickly, helping you to close the sale, provide validation of job results and generate additional duct cleaning and repair business.

The IS9000 package includes a high-resolution colour camera on a 98' cable with a metal reel. It includes a 9" TFT colour monitor, DVR, battery & charger, 2 camera skids, dual earphone output, keyboard, microphone, and an 32 GB card & memory stick, all components are storable in a heavy-duty carrying case.



IS9000W Cable Wheel

### MONITOR

- 9" (228 mm) TFT Colour Monitor
- Monitor Resolution: 800 x 480 Pixels
- Magnetized sunshade for increased visibility in bright or dim light

### CAMERA

- Camera Pixels: NTSC - 720 x 576, PAL - 720 x 576
- Camera Housing: Stainless steel
- Viewing Angle: 105 Degrees, self-leveling
- Light: 12 white LEDs (adjustable intensity)
- Fiber optic Cable: 98'L x 3/16" Dia (30 m x 5 mm)



IS9000C Accessories

### DVR

- 32 GB card and memory stick included
- Storage Medium: SD card, max storage 256 GB
- Movie Format: AVI
- Photo Formatting: JPEG
- 8 levels of digital zoom function
- Snapshot and live feed recording
- Supports text, brightness levels, and image capture while recording video
- Recording audio voiceover and text over

### BATTERY

- Rechargeable Li-ion battery
- 7-hour use time
- Battery charger Included



IS9000K Keyboard

### Ordering info:

IS9000NTSC for North American Market

IS9000PAL, export unit, 230v 50/60 Hz, includes multiple Plugs.





## Air Compressors

### Choose Gas or Electric Air Compressors for Air Driven Duct Cleaning Tools

Abatement Technologies® DUCT-PRO® AIRE-SWEEP® Portable Air Compressors provide the compressed air power needed to power our exclusive line of DUCT-PRO® compressed air driven tools, and loosen caked-on dirt and debris from ductwork systems.

DUCT-PRO® AIRE-SWEEP® compressors are the highest quality compressors available and are specially designed to deliver the airflow and air pressure required for effective and efficient duct cleaning.

Exceptional air volume and pressure, high-air-quality output, low maintenance and user-friendly design make DUCT-PRO® AIRE-SWEEP® compressors the most popular in the duct cleaning industry.

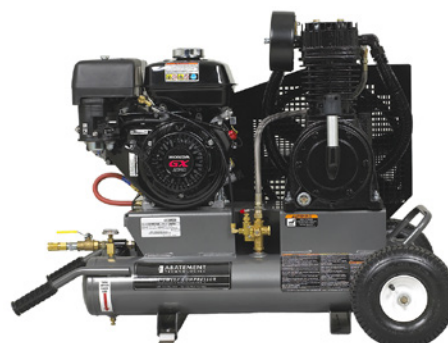
All DUCT-PRO® AIRE-SWEEP® Portable Air Compressors ship as a complete kit which includes the following cleaning tools and accessories:

- 12" Aire-Booster Gun with quick-connect fitting
- Forward AIRE-SWEEP® assembly
- Reverse AIRE SWEEP® assembly
- Three each, 50' non-marking, 250 psi PVC air line hoses with quick-connect fitting

All Portable Air Compressor models feature:

- Quality engines that start easily and run smoothly for years of trouble-free operation
- Two-stage, solid cast iron pump to produce the high volume and pressure needed for special duct cleaning tools
- Easy access oil drain

- Two-piece, 11-gauge steel belt guard to protect the flywheel
- Permanently mounted bracket for an optional detachable hose reel
- Front lifting handle to facilitate lifting into transport vehicle
- In-line filter to protect against moisture and particulate bypass into the ductwork
- Quick connect for fast connection of airline hose
- The industry's most comprehensive warranty and service programs
- Authorized local service centers are available Canada wide



PART NO: C17GH  
- ALL INCLUSIVE  
COMPRESSOR KIT



# DUCT-PRO® Air Compressors

2

PICK YOUR AIR COMPRESSOR

## AIRE-SWEEP® Portable Air Compressor

POWERED BY HONDA®



PART NO: C17GH - ALL INCLUSIVE COMPRESSOR KIT

The heavy-duty DUCT-PRO® AIRE-SWEEP® C17GH Portable Air Compressor and kit is powered by a 9 HP, industrial-grade Honda OHV gas engine. The unit produces an outstanding airflow rate of 17.5 cfm at a rated pressure of 185 psi.

- Two-stage, solid cast iron pump to produce the high volume and pressure needed for the specialized duct cleaning tools
- Large capacity 8-gallon, high-pressure tank
- Large flywheel for extra cooling and longer pump life
- Easily adjusted belt tension
- Rear-mounted fittings and controls
- 7-gauge baseplate reduces vibration

*Kit includes:*

1 ea 12" Aire booster gun (C307-12); 1 ea Forward Aire-Sweep assembly (C310K);  
1 ea Reverse Aire-Sweep assembly (C335K); 3 ea 50' airline hose with quick connects (C250-50).

## AIRE-SWEEP® Portable Air Compressor

POWERED BY KOHLER®



PART NO: C17GK - ALL INCLUSIVE COMPRESSOR KIT

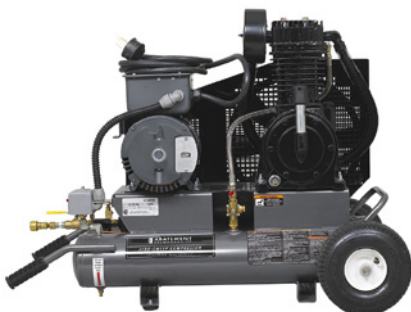
The heavy-duty DUCT-PRO® AIRE-SWEEP® C17GK Portable Air Compressor and kit is powered by a 9.5 HP, industrial-grade Kohler OHC gas engine. The unit produces an outstanding airflow rate of 17.5 cfm at a rated pressure of 185 psi.

- Two-stage, solid cast iron pump to produce the high volume and pressure needed for the specialized duct cleaning tools
- Large capacity 8-gallon, high-pressure tank
- Large flywheel for extra cooling and longer pump life
- Easily adjusted belt tension
- Rear-mounted fittings and controls
- 7-gauge baseplate reduces vibration

*Kit includes:*

1 ea 12" Aire booster gun (C307-12); 1 ea Forward Aire-Sweep assembly (C310K);  
1 ea Reverse Aire-Sweep assembly (C335K); 3 ea 50' airline hose with quick connects (C250-50).

## AIRE-SWEEP® Portable Electric Air Compressor



PART NO: C17E - ALL INCLUSIVE COMPRESSOR KIT

The heavy-duty DUCT-PRO® AIRE-SWEEP® C17-185E Portable Air Compressor and kit is powered by a 5 HP, 230 volt/30 amp electric motor. This compressor is designed for indoor use when a gas engine is impractical. The unit produces an outstanding airflow rate of 17.5 cfm at a rated pressure of 185 psi.

- Two-stage, solid cast iron pump to produce the high volume and pressure needed for the specialized duct cleaning tools
- Large capacity 8-gallon, high-pressure tank
- Easily adjusted belt tension
- Two-piece, 11-gauge steel belt guard for safety and to protect the flywheel
- Rear-mounted fittings and controls provide convenient access
- **Export unit available, C17-185ETF, 230v 50/60 Hz. Plug-less**

*Kit includes:*

1 ea 12" Aire booster gun (C307-12); 1 ea Forward Aire-Sweep assembly (C310K);  
1 ea Reverse Aire-Sweep assembly (C335K); 3 ea 50' airline hose with quick connects (C250-50).





# DUCT-PRO® Agitation Systems

## Compressed Air Driven

3 PICK YOUR ACCESSORIES



PART NO: K3-2000A



### Power Brush System Model K3-2000A

Abatement Technologies DUCT-PRO® Power Brush System provides superior duct cleaning performance using specially designed rotary brushes and compressed air to safely remove caked-on dirt and debris from all types of ductwork surfaces. The NEW power unit is portable and compact enough to be taken easily to any access point in the duct work. It connects to DUCT-PRO® AIRE-SWEEP® compressors for extra cleaning power. A remote device gives the operator total control at the point of brush operation.

- Quick-connect air fitting attachment on the power unit allows compressed air to be supplied through the cable casing, where a special nozzle blasts debris loosened by the power brush
- Fast, secure assembly of all components using quick-connect fittings
- Reversible, bidirectional cable design cleans both sides of the ductwork, resulting in faster and more efficient cleaning
- Variable speed motor provides constant torque at all speeds to handle a variety of duct sizes and materials
- The remote controls 4 functions: on/off, cable speed control, rotation direction (clockwise/counterclockwise), and compressed air activation. The ergonomic, hand-held remote control has a belt clip and is attached to a 15' cable that allows better control and faster response time.
- The new rugged reinforced case combines the unit with a carrying case and storage area to house the remote control, power cord, and small tools for ultimate organization
- Export unit available, K3-2000ATF 230v 50/60 Hz. Plug-less



PART NO: C5000

### Power Rod System Model C5000

The unique DUCT-PRO® Power Rod System from Abatement Technologies is a versatile agitation device and compressed air tool used to remove caked-on dirt and debris from air duct systems. The Power Rod System blasts compressed air through flexible rods to scrub every square inch of the ductwork in a variety of duct types and configurations.

- Power Rods: Deliver compressed air and "whipping action" to the various whip heads and nozzles
- Three different whip heads are used to mechanically clean the interior surfaces of ductwork. All whip heads are attached to male quick-connect fittings and easily fit through standard 1" access holes
- 3 ea. 5' Low, Medium, High-Flex Power Rods: Provide almost unlimited options for cleaning all configurations and types of ductwork
- 1 each single whip head, three-whip head, and eight whip head, all 16" long
- Forward and reverse nozzles deliver air blasts where conventional Aire-Sweeps cannot reach. 6' Airline with control valve - Reinforced airline delivers compressed air from the control valve to the rods
- Rod case for easy storage and transport
- Rods, nozzles and whip heads are easily and securely connected by quick connects
- Fittings and nozzles are made of solid brass and aluminum for durability



1 ea.



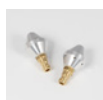
1 ea.



1 ea.



1 ea.







# DUCT-PRO® Tools

## Compressed Air Driven

3 PICK YOUR ACCESSORIES

### Aire Booster Guns



Uses venturi effect to increase air thrust by 200%

- C307-12 DUCT-PRO® 12" Aire-Booster Gun, includes male quick connect fitting
- C307-24 DUCT-PRO® 24" Aire-Booster Gun, includes male quick connect fitting
- C307-48 DUCT-PRO® 48" Aire-Booster Gun, includes male quick connect fitting
- Connects to C250-50 airline hose assembly, includes male quick connect fitting.

PART NO: C307-12, C307-24, C307-48

### Detachable Hose Reel



- C17-HR Detachable Hose Reel with 50' of Rubber Outdoor Hose
- Slips on and off mounting bracket easily
- Connects to compressor via a quick connect fitting.
- Rewind handle for fast retrieval.

PART NO: C17-HR

### AIRE-BAG Inflatable Zone Bags



- Designed to "zone off" a duct system into smaller, more manageable sections
- To use, simply insert the bag into the duct and inflate with air through the 36" inflation tube
- Bag conforms to the inside of the duct and forms an excellent seal
- Three sizes available: 18", 24" & 36"

PART NO: K5218, K5224 & K5236

### Aire-Vac Compressed Air Vacuum



- Converts compressed air into a vacuum without electricity
- Lightweight, compact aluminum body fits through duct access holes to pick up dust, dirt and other contaminants
- Operates on 60-185 psi
- Produces approximately 12 cfm @ 60 psi

PART NO: V80-201

### Forward AIRE-SWEEP® Assembly



- Forces air and debris forward away from the operator
- 20' long, can clear an entire branch run from the register to the main duct
- Ideal for limited-access ducts above plaster ceilings or in slabs
- 5/8" OD hose is flexible enough to maneuver, yet stiff enough not to curl back when air is applied

PART NO: C310K

### Reverse AIRE-SWEEP® Assembly



- Nylon nozzle points rearward to force air and debris back toward the operator
- Can clear an entire branch run from the main duct to the register
- Very flexible hose provides great action inside the duct
- Two lengths available: 25' (C320K) and 35' (C335K)
- Also available with 35' reinforced hose (C300-K2)

PART NO: C320K & C335K



# DUCT-PRO® Agitation Systems

## Drill Driven

3

PICK YOUR ACCESSORIES

### Power Whip System Model K3-1020



PART NO: K3-1020



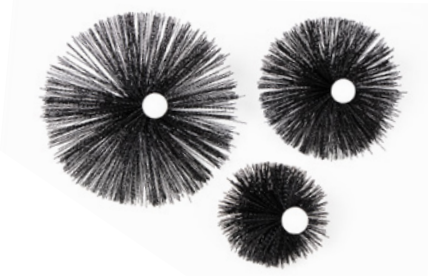
The Abatement DUCT-PRO® Power Whip is a 20 foot long, bidirectional drive cable powered by a standard 3/8" or 1/2" electric drill (not included). Whip straps attached to the end of the Power Whip provides aggressive agitation inside the duct system. Special duct brushes can be substituted for the whip straps to provide additional agitation options.

- 20 foot, bidirectional drive cable powered by a standard 3/8" or 1/2" electric drill (not included)
- Bidirectional design permits the operator to clean both sides of a 20' section from a single access point and clean more difficult square or rectangular ducting
- Includes a 20' cable and three whip sizes for optimal cleaning of metal ductwork
- 1-inch wide nylon straps rotate in 10", 14" or 18" diameter circle to clean the ductwork
- Whip Connector features a unique locking pin mechanism for fast whip or brush changes
- Optional brushes are designed for cleaning all configurations and types of ductwork

### Dryer Vent Cleaning System Model K3-4100



PART NO: K3-4100



The Abatement Technologies DUCT-PRO® Dryer Vent Cleaning System is designed to increase revenue by adding dryer vent cleaning services for professional duct cleaners. Using a standard power drill (not included), this specially-designed tool loosens debris from dryer vents prior to removal using compressed air or vacuum.

- Flex rods powered by a standard 3/8" or 1/2" electric drill for intense agitation of the contaminants inside the dryer vent system
- Carrying case
- 5 ea. 40" medium flex cleaning rods
- 9 ea. 24" high flex cleaning rods
- Rods and tools snap together via sturdy, metal precision couplings
- Set of brushes: 4", 6" & 8"
- Dryer lint brush
- 12" spring lead
- Includes special "blockage removal" tool to dislodge bird nests and other tough blockages
- Includes drill driver and adaptor to snap high flex rods to medium flex rods
- Optional adaptor for duct brushes and optional nylon whip head



# DUCT-PRO® Tools & Other Accessories

3 PICK YOUR ACCESSORIES

## Flex-A-Lite Fogger



PART NO: K9-2600-08

- Converts antimicrobials and/or deodorizers into an aerosol fog that is applied to duct surfaces
- Extra long 48" hose to enable operator to reach overhead ductwork
- Variable output from 0-18 ounces per minute
- 1½ gallon plastic tank
- Two-stage fan provides proper air velocity for creating extremely small droplets
- Export unit available, K9-2600-TF, 230v 50/60 Hz. Plugless.

## Grill Masks & Dispensers



- The fastest and easiest way to temporarily cover registers & grills
- Masks do not come off if negative pressure is temporarily disrupted
- Convenient dispenser can be worn around the neck or waist
- Available in 8" wide and 13" wide rolls

GRILL MASK PART NO: K1-GM8 (8") & K1-GM13 (13")  
DISPENSER PART NO: K1-GM-DS-8 & K1-GM-DS13

## MALCO® Hole Cutter & VARI-BIT® Hole Saw



PART NO: K1-HC1 & K2-VB2

- MALCO® cuts perfect 2" to 12" diameter holes in metal ductwork for vacuum flex duct connection
- VARI-BIT® bores burr-free 1" access holes for inserting the AIRE-SWEEP® Tools
- Time-saving tools give your job a precise, professional look

## Caplugs® & Zip Screws



- CAPPLUGS® snap quickly and easily into 1" AIRE-SWEEP® access holes
- CAPPLUGS® provide a snug, leak-proof fit and are easily removed
- Zip screws require no pilot hole
- Sharp points and dual threads provide fast driving and easy penetration

PART NO: K4-1000 (CAPPLUGS) & K1-ZS1000 (ZIP SCREWS)

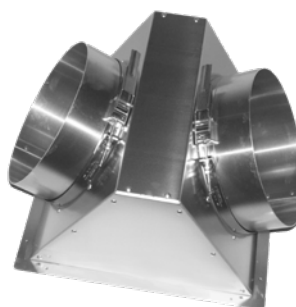
## Cut-Resistant Safety Gloves & Sleeves



PART NO: K9-698 & K9-695

- Made of cut-resistant Dupont Kevlar® material
- Provides hand and arm protection against sharp edges
- Rugged yet extremely flexible and lightweight
- Open weave construction enhances user comfort

## Dual Inlet Manifold



PART NO: H2580

- Used to combine two HEPA-AIRE® Portable Power Vacuums for maximum airflow on larger jobs
- Simple to use: Attach manifold to ductwork, then attach the 12" inlet flex duct from the two power vacs
- Pre-drilled to facilitate quick attachment to the ductwork
- Gasketed for a tight, leak-proof seal





# Commercial Drying Equipment

## DEHUMIDIFIERS

The new AQUATRAP® RS line from Abatement Technologies® delivers the same powerful structural drying power as their predecessors and now features a stackable roto-moulded plastic cabinet.

### AQUATRAP® AT150RS / AT250RS LGR Dehumidifier



PART NO: AT150RS & AT250RS (STACKED)



PART NO: AT250RS

#### AT150RS:

- Water removal @ AHAM (80°F / 60%RH): 74 Pints / 35L per day
- Rated Air Flow: 354 cfm / 600 m3/h
- Amperage: 9.5A max

#### AT250RS:

- Water removal @ AHAM (80°F / 70%RH): 69 Pints / 33L per day
- Rated Air Flow: 413 cfm / 700 m3/h
- Amperage: 12A @ AHAM -13A max

- Stackable, efficient, and affordable
- Space saving storage and up to 2 units high
- Handles for easy lifting & folding handle for storage
- Quick connect hoses and “no tools” filter changes

## AIR MOVERS

### RAM Low Profile Air Movers



PART NO: RAM1000LP

- 2 Speed settings: High (1000 cfm) and Low (700 cfm)
- Can be placed in 4 drying positions
- Onboard GFCI protects against electrical shock in damp or wet applications
- Designed to stack for easy storage
- Conforms to UL 507 and CSA 22.2 No. 113 standards
- Less than 2 amps on high

### RAM Centrifugal Air Movers



PART NO: RAM1000DBL

- High velocity: 2,850 fpm @ high speed
- Air volume: 1,125 cfm @ high speed
- 2.4 amps (low speed) / 2.8 amps (high speed)
- Perfect weight balance: Weighs only 25 lbs
- 3 operating positions: Horizontal, 45 degrees and vertical



## Chemicals

It is generally agreed that source removal of contaminants remains the single best method for cleaning and decontaminating HVAC systems. However, chemicals may be applied within HVAC systems for a variety of reasons. Applying appropriate cleaning compounds may enhance the cleaning process (e.g., coils, hard surfaces, blowers). We stock the best brands that have been formulated and certified by the EPA and or Health Canada for safe application.

### BBJ Mould Control®



- Controls the growth of mould and mildew in HVAC systems
- EPA registered for use in occupied spaces
- Mix and apply with a fogger or other aerosol method
- 3 bottles/case, one 15 oz. bottle yields 7.5 gallons of solution
- Fungistat (mould and mildew) and disinfectant

PART NO: K6-4300

### BBJ FreshDuct Duct Deodorizer



- Industrial odour control and eliminator for use in HVAC systems
- Formulated for safe application in occupied areas
- Mix and apply with a fogger
- 3 bottles/case, one 15 oz. bottle yields 5 gallons of solution

PART NO: K6-4900

### BENEFECT® (BF50475)



- Botanical, pure and biodegradable ingredients
- Ready to use, intermediate level disinfectant
- No rinse or wipe required
- Suitable for use around children, pets, the elderly and chemically-sensitive individuals
- No PPE required, product isn't corrosive, flammable or reactive

PART NO: BF50475

### CONCROBIUM® Mould Control (AS300-1)



- Introduces zero VOCs into the environment
- Offers mould elimination and prevention in a single solution
- Has absolutely no odour and requires zero isolation time
- Requires no special handling or protective equipment
- Can be fogged to treat large and inaccessible spaces

PART NO: AS300-1

### BIO-MIGHT® 100 Coil Cleaner Concentrate



- Industrial cleaner/degreaser
- Non-toxic and biodegradable
- Mix with water
- Sold in 1 gallon jugs, 4/case

PART NO: B101

### FOSTER® Fungicidal Protective Coating (K6-4020)



- Used on HVAC systems
- EPA registered, antimicrobial coating for HVAC duct systems
- Helps prevent the spread of mould and odour causing bacteria
- Tough elastic finish is flexible to allow for movement without splitting
- Apply with brush or airless sprayer
- Sold in 5 gallon pails, 1/each

PART NO: K6-4020



## Portable HEPA Vacuums



PART NO: V8000WD

### Canister Style Wet/Dry HEPA Vac

- Exceptional wet/dry performance: 135 cfm and 92" static lift
- Portable, compact & lightweight design: 22 lbs
- Durable polyethylene cabinet
- 1.6 HP motor
- True 99.97%+ efficiency HEPA filter
- Comes with complete tool set
- 8 gallon tank capacity
- 22 foot power cord
- Filters:
  - V8040-5 - Fleece Filter Bag, 5/pk
  - V8042 - HEPA Filter, DRY USE ONLY, 1/ea
  - V8042-W - HEPA Filter, Wet/Dry Use, 1/ea



PART NO: GD930

### Canister Style Dry HEPA Vac

- Exceptional performance: 74 cfm and 92" static lift
- Portable, compact & lightweight design: 16.5 lbs
- Sturdy chrome-plated steel container
- True 99.97%+ efficiency HEPA filter
- Tool set included
- 4 gallon tank capacity
- 32 foot power cord
- Filters:
  - V93040 - Replacement Bags, 10/pk
  - V930-10 - HEPA Filter, 1/ea



PART NO: GD10

### Backpack HEPA Vac

- Lightweight, ergonomic design to reduce fatigue
- Powerful: 99 cfm airflow & 96" static lift
- Upstream HEPA filter rated 99.99% @ 0.3 microns
- Tool set included
- 50 foot power cord
- Filters:
  - V1471097500 - Dust Bag, 5/pk
  - V1471104500 - HEPA Filter, 1/ea





## CAP<sup>®</sup> Central Air Purifiers

Drive additional revenue by providing an exceptional indoor air quality (IAQ) CAP<sup>®</sup> Whole House Air Purifier to add a layer of protection for your clients after your service.

Abatement Technologies' line of whole home purification products continually filter the air traveling through the HVAC system to help maintain a high level of indoor air quality within homes and commercial spaces.

Depending upon the CAP unit selected, features include: true HEPA 99.97% filtration, activated carbon, ultraviolet (UV-C) germicidal light, and photolysis oxidation that remove harmful particles and pathogens from the air and help protect occupants.



### Whole House Indoor Air Quality

CAP<sup>®</sup> Whole House Air Purifiers are a perfect IAQ upgrade for both existing homes and new home construction. They provide multiple levels of protection and purification while unobtrusively installed next to the HVAC air handler as a partial bypass air purifier, or in the HVAC ductwork as UVGI lamp irradiation.

With greater focus on overall health and the impacts airborne contaminants can have on people, Abatement Technologies CAP<sup>®</sup> systems create an excellent added revenue opportunity for Duct Cleaners and HVAC specialists alike.

### Whole House HEPA Protection

HEPA (High Efficiency Particulate Air) filters are some of the most effective small-particle filters available, with media filtration efficiency of 99.97% or higher against 0.3-micron particles. That's why they are used to provide critical air cleaning in areas such as hospital operating rooms, nuclear facilities, pharmaceutical labs and electronics manufacturing. Now true HEPA technology is available for homes and commercial spaces.

Smoke from fires or cigarettes are tackled in 3 ways:

- Activated carbon,
- UVP lamp technology, and
- HEPA filters for the smoke particles.



### Most Common Indoor Air Allergens



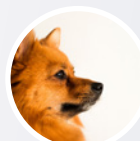
Bacteria



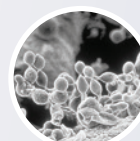
Pollen



Dust Mites



Pet Hair



Fungi



Mould



## CAP<sup>®</sup> Central Air Purifiers

CAP600 and 1200 series systems are designed for professional installation into the HVAC air return duct near the air handler, in an out of the way location such as a basement, crawl space or attic. A 'partial bypass' installation configuration enables the device to purify about 50% of the return-air during each pass through the HVAC system. Typically, the entire air volume within the living space of a home can be HEPA filtered 50 to 75 times per day. These systems provide their own blower to allow for a high performing HEPA filter to capture contaminants without adding additional resistance to the airflow.



PART NO: CAP600-UV & CAP600-UVP

### CAP600-UV and CAP600-UVP Residential Air Purifiers

The CAP600-UV is sized for 1-4 ton HVAC air handlers, giving multiple levels of purification.

The CAP600-UV and CAP600-UVP models feature a 1"-deep large particle pre-filter, a 2" VAPOR-LOCK<sup>®</sup> carbon intermediate filter, and a 99.97% HEPA filter.

Multiple filtration stages remove particles far too small to be captured by most types of filters:

- Sized for 1-4 ton HVAC air handlers
- Four purification stages
- UVGI Germicidal Lamp
- Activated carbon filter
- A 99.97% efficient true HEPA filter
- CAP600-UVP model features an additional UV "Plus" dual-purpose germicidal UV & photolysis oxidation (ozone) lamp



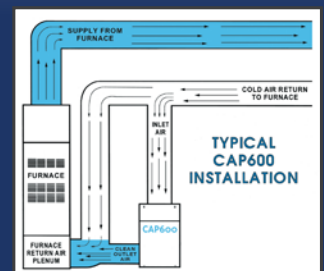
PART NO: CAP1200UV & CAP1200UVP

### CAP1200UV & CAP1200UVP Residential Air Purifiers

The larger CAP1200-UV model has about 50% more air filtration capacity than the CAP600-UV. It features an additional 2"-deep particulate pre-filter, a heavier duty VAPOR-LOCK<sup>®</sup> carbon filter, and a high-capacity HEPA filter, for added dirt holding and odour removal capacity. It is sized for a 5+ ton system, or can give more air changes with a smaller system when there is a higher need for purification.

- Sized for 4-10 ton HVAC air handlers
- Five Purification Stages
- UVGI germicidal lamp
- Activated carbon filter
- A 99.97% efficient true HEPA filter
- CAP1200UVP model features an additional UV "Plus" dual-purpose germicidal UV & photolysis oxidation (ozone) lamp

The CAP600-UV and CAP1200UV feature the same germicidal UV (UVGI) lamp technology hospitals use to control infectious pathogens to irradiate microbes in the air stream. It treats the inside of the HEPA filter with UVGI energy during each pass through the HVAC system.





## CAP<sup>®</sup> Central Air Purifiers 'Duct-Mounted' Installation

### The CAP500 germicidal UV lamp

The CAP500-UV irradiates the HVAC system 24/7 with powerful UV-C lamp technology. The CAP500-UVP also provides enhanced odour control, ideal for musty odours caused by dampness.

### CAP500-UV & CAP500-UVP Residential Air Purifiers



PART NO: CAP500-UV & CAP500-UVP

The CAP500-UV and CAP500-UVP Lamp Systems are sold and installed by professional contractors into the central air handler of the HVAC system. They can be used as a standalone UV air purifier, or used in combination with HEPA filtration systems as an added layer of protection from airborne dangers.

The CAP500 Central Air Purifiers are designed to destroy bacteria, mould, and other health threatening microbes that can live and multiply inside HVAC systems. These units feature a powerful 1,950  $\mu\text{w}/\text{cm}^2$  16" germicidal UV-C or UV "Plus" lamp that can also break down and neutralize many VOCs (Volatile Organic Compounds) and unpleasant odours. The unit includes safety interlocks and monitoring lights.

- CAP500-UV, Base unit with 16" germicidal UV disinfection lamp
- CAP500-UVP, Base unit with 16" germicidal UV "Plus" dual purpose germicidal UV & photolysis oxidation (ozone) lamp



## The CAP500-UV guards against mould, bacteria and odours

### Optional 'UV Plus' Technology

The optional UV-Plus lamp combines powerful UVGI intensity plus ozone for enhanced odour control and uses a powerful photolysis oxidation process to produce a low, controlled amount of ozone gas, which is able to destroy fungal spores and unpleasant odours. The ozone gas breaks down quickly within the HVAC ductwork as it reacts with odour-causing compounds, so ozone levels in the occupied spaces are low.



Help destroy fungal spores and odours  
with effective UVGI





# Portable Power Vacuums and Replacement Filters

## HEPA-AIRE® PORTABLE POWER VACUUMS

Be ready to start your job. Kits include:

- ✓ 1 HEPA-AIRE® Power Vac
- ✓ 1 H2240-12K Quick Connect collar with clamp
- ✓ 1 H2020-12 HD PVC Flex Duct 12" x 25'
- ✓ 1 H2250 Quick Connect 12" Collar

## HEPA-AIRE® PORTABLE POWER VACUUMS

PART NO.	PRODUCT DESCRIPTION
H2500IVK	H2500IV INTELLIVAC® Four Module Portable Vacuum. Complete with all filters and transport sealing plates, locking clamp, and power cord. Kit also includes 1 H2240-12K, 1 H2030-12, and 1 H2250.
H2500CK	Two Module Economy Power Vacuum. Complete with all filters and locking clamp. Kit also includes 1 H2240-12K, 1 H2030-12, and 1 H2250.
H2200K	H2200 Single Module Portable Power Vacuum. Complete with all filters and locking clamp. Kit also includes 1 H2240-12K, 1 H2030-12, and 1 H2250.
H4500IVK	H4500IV Four Module Dual Motor INTELLIVAC® Power Vacuum. Complete with all filters and transport sealing plates, locking clamp, and 2 power cords. Kit also includes 1 H2240-12K, 1 H2030-12, and 1 H2250.
H2500TF	H2500TF Four Module 220/50 INTELLIVAC® Portable Power Vacuum. Complete with all filters and 2 transport sealing plates, 1 locking clamp, and 1 power cord. For use in countries with 220-230 volt/50 cycle electrical current.
H4500TF	H4500TF Four Module Dual 220/50 Motor INTELLIVAC® Portable Power Vacuum. Complete with all filters and 2 transport sealing plates, 1 locking clamp, and 2 power cords. For use in countries with 220-230 volt/50 cycle electrical current.

## HEPA-AIRE® PORTABLE POWER VACUUMS FILTER CHART

FILTER OR ACCESSORY	H2500IV-ESA	H2500C-ESA	H4500IV-ESA	H2200-ESA
Stage 1: Prefilter	H2515B	H2515B	H4515B	F2221
Stage 2: Secondary Filter	H8518XLT	H8516XLT	H8520XLT	H2255XLT
Final Stage: 99.97% HEPA Filter	H2418-99	H2418-99	H4520-99	H1210C-99



# Replacement Filters and Accessories

## HEPA-AIRE® PORTABLE POWER VACUUM REPLACEMENT FILTERS

PART NO.	PRODUCT DESCRIPTION	STANDARD CASE PACKAGING
H2515B	Prefilter Reusable Bag for H2500, H2500IV, H2500B, H2500C and H2500TF	1 Each
H4515B	Prefilter Reusable Bag for H4500 series	1 Each
F2221	Prefilter for H2200 (full case)	12 Each
H2255XLT	Pleated Secondary Bag Filter for H2200 (full case)	4 Each
H8518XLT	Pleated Secondary Bag Filter, MERV 11 efficiency, for H2500, H2500IV, H2500TF, H2500B, H4000 and H5000 (full case)	4 Each
H8516XLT	Pleated Secondary Bag Filter MERV 11 efficiency, for H2500C (full case)	4 Each
H8520XLT	Pleated Secondary Bag Filter MERV 11 efficiency, for H4500 series (full case)	4 Each
H1210C-99	Replacement 99.97% Cylindrical HEPA Filter for H2200	1 Each
H2510-99	Replacement 99.97% for H2500B, H2500E and H2500 (s/n through 1154)	1 Each
H2418-99	Replacement 99.97% HEPA Filter for H2500C, H2500IV, H2500TF and H2500 (s/n 1155 and over)	1 Each
H4520-99	Replacement 99.97% HEPA Filter for H4500 series	1 Each

## POWER VACUUM FLEX DUCT

PART NO.	PRODUCT DESCRIPTION	STANDARD CASE PACKAGING
H2030-08	Clear Heavy Duty PVC Flex Duct. Wire reinforced, 8" diameter x 25' length	1 Each
H2030-12	Clear Heavy Duty PVC Flex Duct. Wire reinforced, 12" diameter x 25' length	1 Each
H2030-12-05	Clear Heavy Duty PVC Flex Duct. Wire reinforced, 12" diameter x 5' length	1 Each
H2030-12-10	Clear Heavy Duty PVC Flex Duct. Wire reinforced, 12" diameter x 10' length	1 Each
H2308-08	Duct Hose Joint. Satin coat finish (joins 2 sections of 8" flex duct)	1 Each
H2312-12	Duct Hose Joint. Satin coat finish (joins 2 sections of 12" flex duct)	1 Each



# Replacement Parts and Accessories

## PORTABLE POWER VACUUM ACCESSORIES

PART NO.	PRODUCT DESCRIPTION	STANDARD CASE PACKAGING
H2250	Inlet Duct Quick Connect (to PPV unit)	1 Each
2000	Replacement Outlet Collar - 12" Injection Moulded c/w Gasket	1 Each
2107	Replacement Stainless Collar Ring for all duct cleaning power vacuums	1 Each
H2533	Retro-fit Kit for adding casters to upper handle section of H2500	1 Each
H2550	Full Length Quilted Cover for H2500C, H2500IV or H2500TF Portable Power Vac	1 Each
H2580	Dual Inlet Manifold, for connecting two vacuum systems together	1 Each
EDP78	Replacement Power Cord for H2500C and H2200	1 Each
H2092-25TL-ESA	Power Cord with Turn and Lock Female End, #12/3 AWG, 25' length (for all 110 volt HEPA-AIRE® PPV models with twist-lock receptacles)	1 Each
H2092-25TF	Power Cord with Turn and Lock Female End, #12/3 AWG, 25' length (for all 220 volt HEPA-AIRE® PPV TF models with twist-lock receptacles)	1 Each
H2092-25	Extension Cord, #12/3 AWG, 25' length, straight blade	1 Each
CASTER03	2" Replacement Caster for upper handle section on H2500 models and H2500 with bracket assembly (before serial # 2100)	1 Each
CASTER06	2-1/2" Replacement Heavy Duty Front Wheels or H4500 series, H2500IV, H2500C, and H2500 without Bracket Assembly	1 Each
CASTER02	3" Replacement Front Wheels for H2200	1 Each
CASTER05	Replacement 10" Non-Marking Rear Wheels for H2500 & H4500 Series	1 Each
H2530	Replacement Stair Climber Assembly for all models	1 Each
H2212-08	Tapered Reducing Collar, 12" to 8", satin coat finish	1 Each
H2240-08K	Quick-Connect Attachment Collar for 8" Flex Duct (includes H2350-08 locking clamp)	1 Each
H2240-12K	Quick-Connect Attachment Collar (to the plenum) for 12" Flex Duct (includes H2350-12 locking clamp)	1 Each
H2350-08	8" Replacement Locking Clamp	1 Each
H2350-12	12" Replacement Locking Clamp	1 Each
LATCH04B	Sm. Keeper for H2200, H2500 & H4500 series filter door and panel cover	1 Each
LATCH04	Sm. Latch for H2200, H2500 & H4500 series filter door and panel cover	1 Each
LATCH05B	Lg. Keeper for H2500 & H4500 series modules	1 Each
LATCH05	Lg. Latch for H2500 & H4500 series modules	1 Each





# DUCT-PRO® AIRE-SWEEP® Compressors

## Replacement Parts and Accessories

Be ready to start your job. Kits include:

- ☑ 1 Compressor
- ☑ 1 C310K Forward AIRE-SWEEP® Assembly w/20' hose
- ☑ 1 C335K Reverse AIRE-SWEEP® Assembly w/35' hose
- ☑ 1 C307-12 12" AIRE-BOOSTER gun
- ☑ 3 C250-50 Airline Hose assembly & quick connect 50' hose

PART NO.	PRODUCT DESCRIPTION	STANDARD CASE PACKAGING
C17-185GH	Portable Gasoline Air Compressor Package with 2 stage Cast Iron Pump, 17 cfm @ 185 psi with 9 HP Honda engine. Kit also includes: 1 ea. C17-185GH Air Compressor, 1 ea. C310K, 1 ea. C335K, 1 ea. C307-12, and 3 ea. C250-50.	As Listed
C17-185GK	Portable Gasoline Air Compressor with 2 stage Cast Iron Pump, 17 cfm @ 185 psi with 9.5 HP Kohler engine. Kit also includes: 1 ea. C17-185GK Air Compressor, 1 ea. C310K, 1 ea. C335K, 1 ea. C307-12, and 3 ea. C250-50.	As Listed
C17-185E	Portable Electric Compressor with 2 stage Cast Iron Pump, 17 cfm @ 185 psi with 5 HP 230v/30a/60Hz motor. Kit also includes: 1 ea. C17-185E AIRE-SWEEP® Compressor, 1 ea. C310K, 1 ea. C335K, 1 ea. C307-12, and 3 ea. C250-50.	As Listed

## COMPRESSOR ACCESSORIES

PART NO.	PRODUCT DESCRIPTION	STANDARD CASE PACKAGING
C17-HR	Detachable Hose Reel with 50' of Rubber Outdoor Hose	1 Each
C200-50	Rubber outdoor airline hose 3/8" x 50", Neon Green	1 Each
C250-50	3/8" x 50' Airline Hose Assembly, 250 psi rating, non-marking PVC Hose with quick-connect fittings (blue hose)	1 Each
C310K	Forward AIRE-SWEEP® Assembly with 20' black hose	1 Each
C3113	Replacement Forward AIRE-SWEEP® Nozzles (for C310K) white plastic, cs/3	3 Each
C320K	Reverse AIRE-SWEEP® Assembly with 25' Clear Hose	1 Kit
C335K	Reverse AIRE-SWEEP® Assembly with 35' Clear Hose	1 Kit
C300-K2	Reverse AIRE-SWEEP® Assembly with 35' Reinforced Hose	1 Kit
C3213	Replacement Reverse AIRE-SWEEP® Nozzles plastic (for C320K, C335K, C300-K2)	3 Each
C5060	6' Airline with Hand Control Valve (comes with C5000)	1 Each
C5062	6' Airline with Ball Valve to regulate air flow, brass fittings included	1 Each
C304	Hand Operated Air Valve, includes male quick connect fitting	1 Each
C307-12	DUCT-PRO® 12" Aire-Booster Gun, includes male quick connect fitting	1 Each
C307-24	DUCT-PRO® 24" Aire-Booster Gun, includes male quick connect fitting	1 Each
C307-48	DUCT-PRO® 48" Aire-Booster Gun, includes male quick connect fitting	1 Each
C17-190225	Replacement Air Filter Assembly for all Mi-T-M pumps with 9 H.P. engines (after 1-1-03)	1 Each
C17-190226	Replacement Air Filter Only for all Mi-T-M pumps with 9 H.P. engines (after 1-1-03)	1 Each
C350-08	Replacement Air Filter Element for 8 and 9 H.P. Honda Engines	1 Each
C350-SR	Replacement Air Filter Element for 9 H.P. Subaru Engine	1 Each
V80-201	DUCT-PRO® Aire-Vac Compressed Air Vacuum Kit	1 Each
V99-645	Replacement Filter Bag For V80-201	1 Each



## Replacement Parts And Accessories

### DUCT-PRO® POWER BRUSH SYSTEM (Motorized with Compressed Air Option)

PART NO.	PRODUCT DESCRIPTION	STANDARD CASE PACKAGING
K3-2000A	NEW! Complete DUCT-PRO® Power Brush System, Includes: 1 ea. K3-2022 (comes with K3-2023), K3-2025	As Listed
K3-2000ATF	Export unit of K3-2000A, for use on 220 volt/50 hz circuit only	As Listed
K3-2022	Power Brush Power Unit, includes K3-2023 remote control	1 Each
K3-2022TF	Power Brush Power Unit, 220v/50hz for export, w/ remote ctrl	1 Each
K3-2023	Remote control with 15' cable for DUCT-PRO® K3-2022 Power Brush units (black case), serial #3000 & newer	1 Each
K3-2021X	Remote Control with 15' Cable for K3-2000 Power units (red), Serial #s 2000-2999	1 Each
K3-2025	25' Flexible Drive Shaft with Nozzle	1 Each
K3-11755	Replacement Inner Cable for K3-2025 (Mfg. After 11-01, Identifiable by Gold Sticker on Cable Drive End)	1 Each
K3-11752	Replacement Nozzle for K3-2025 (Mfg. After 11-01, Identifiable by Gold Sticker on Cable Drive End)	1 Each
K3-2090	Brush Set for K3-2000 and K3-1020 Includes: 1 each (K3-2071, K3-2072, K3-2073, K3-2081, and K3-2082)	1 Set
K3-2074	6 1/2" x 3" Soft Poly Brush	1 Each
K3-2071	8" x 4" Soft Poly Brush	1 Each
K3-2072	12" x 4" Soft Poly Brush	1 Each
K3-2073	18" x 4" Soft Poly Brush	1 Each
K3-2081	7"/13"/17" x 8" Poly Step Brush	1 Each
K3-2082	11"/18"/11" x 8" Poly Step Brush	1 Each

### DUCT-PRO® POWER WHIP SYSTEM (Drill Driven)

PART NO.	PRODUCT DESCRIPTION	STANDARD CASE PACKAGING
K3-1020	DUCT-PRO® Power Whip System with 20' Cable. Includes: 1 ea. of 10", 14", and 18" whips	1 Each
K3-1120	Replacement 20' Cable Only for K3-1020	1 Each
K3-11515-1	Replacement inner cable for K3-1020	1 Each
K3-1210	Replacement whips, 10" diameter	5 Each
K3-1214	Replacement whips, 14" diameter	5 Each
K3-1218	Replacement whips, 18" diameter	5 Each
K3-2090	Brush Set for K3-2000 and K3-1020. Includes: (1 ea. of: K3-2071, K3-2072, K3-2073, K3-2081, and K3-2082)	1 Set
K3-1030	Power whip connector (connects whips to cable)	1 Each
K3-11761	Connecting Pin for Whips (cotter pin)	1 Each



## Replacement Parts And Accessories

### DUCT-PRO® POWER ROD SYSTEM (Compressed Air Driven)

PART NO.	PRODUCT DESCRIPTION	STANDARD CASE PACKAGING
C5000	DUCT-PRO® Power Rod System Complete. Includes: 3 ea. C5001, C5002, C5003; 1 ea. C5038, C5011, C5021, C5050, C5053, C5058, and C5060	As Listed
C5001	5' Low-Flex Power Rods (black band)	1 Each
C5002	5' Medium-Flex Power Rods (red band)	1 Each
C5003	5' High-Flex Power Rods (no band)	1 Each
C5038	Rod Case for Power Rods	1 Each
C5011	Forward Power Rod Nozzle	1 Each
C5021	Reverse Power Rod Nozzle	1 Each
C5040	Replacement Brass Threaded Fitting for all Heads	1 Each
C5050	Single Whip Power Rod Head, Black Hose (new smaller style)	1 Each
C5053	Three-Whip Power Rod Head, Clear Hose	1 Each
C5058	Eight-Whip Power Rod Head, Black & Red Hoses	1 Each
C5060	6' Airline with Control Valve	1 Each
C5061	Replacement 6' Airline with Fitting for C5060	1 Each
C5058	Air Control Valve for DUCT-PRO® Power Rod System	1 Each
C5066	Air Control Valve for Power Rod System	1 Each

### DUCT-PRO® DRYER VENT CLEANING SYSTEMS (Drill Driven)

PART NO.	PRODUCT DESCRIPTION	STANDARD CASE PACKAGING
K3-4100	Residential/Commercial DUCT-PRO® Dryer Vent Cleaning System includes: 9 ea K3-4104; 5 ea K3-4103; 1 ea K3-4108; 1 ea K3-4105; 1 ea K3-4106; 1 ea K3-4111; 1 ea K3-4120; 1 ea K3-4124; 1 ea K3-4126; 1 ea K3-4128; 1 ea K3-4130	As Listed
K3-4103	40" Medium-Flex Dryer Vent Cleaning Rod (red band)	1 Each
K3-4104	24" High-Flex Dryer Vent Cleaning Rod (no band)	1 Each
K3-4105	12" Spring Lead	1 Each
K3-4106	Drill Driver Head Adapter for Dryer Vent Flex Rods	1 Each
K3-4107	Adapter to use Dryer Vent Rods with Duct Cleaning Brushes (K3-2090)	1 Each
K3-4108	Adapter 1/2" Female to 3/8" Male	1 Each
K3-4111	Blockage Remover	1 Each
K3-4113	Nylon Whip Head - Commercial 24"	1 Each
K3-4120	Dryer Lint Brush	1 Each
K3-4124	4" Dryer Brush with Coupler	1 Each
K3-4126	6" Dryer Brush with Coupler	1 Each





## Replacement Parts And Accessories

### DUCT-PRO® DRYER VENT CLEANING SYSTEMS (Drill Driven Continued)

PART NO.	PRODUCT DESCRIPTION	STANDARD CASE PACKAGING
K3-4128	8" Dryer Brush with coupler	1 Each
K3-4130	Case for Dryer Vent Cleaning Rods	1 Each
K3-7320	4" Dryer Vent Brush on 20' Handle for Manual Cleaning	1 Each
K3-2090	Duct Brush Set for use with K3-4107 Duct Brush Adapter. Includes: 1 ea. K3-2071, K3-2072, K3-2073, K3-2081, and K3-2082	1 Set

### DUCT-PRO® TOOLS AND ACCESSORIES

PART NO.	PRODUCT DESCRIPTION	STANDARD CASE PACKAGING
K1-GM-8	Grill-Mask 8" wide x 185' long roll, (6 rolls per case)	1 Case
K1-GM-13	Grill-Mask 13" wide x 185' long roll, (3 rolls per case)	1 Case
K1-GM-DS-8	Grill-Mask Dispenser for 8" wide Grill-Mask	1 Each
K1-GM-DS13	Grill-Mask Dispenser for 13" wide Grill-Mask	1 Each
K1-HC1	MALCO® 2" - 12" Hole Cutter	1 Each
K1-CB	Replacement Bit for K1-HC1 Hole Cutter	1 Each
K1-HC1B	Replacement Pivot Pin for K1-HC1	1 Each
K1-ZS1000	Zip Screws, (7 x 1/2), ( 1,000 per pkg)	1 Pkg.
K2-VB2	VARI-BIT® 1" Hole Cutter	1 Each
K4-1000	Premium 1" Plastic Hole Plugs, (1,000 per pkg)	1 Pkg.
K5218	18" x 18" Aire-Bag inflatable 20 Mil PVC Zone Bags	1 Each
K5224	24" x 24" Aire-Bag inflatable 20 Mil PVC Zone Bags	1 Each
K5236	36" x 36" Aire-Bag inflatable 20 Mil PVC Zone Bags	1 Each
K9-695	Kevlar® Cut-Resistant Sleeve, 21" long, for protection against arm cuts	1 Each
K9-698	Kevlar® Cut-Resistant Glove, mens size large, for protection against hand cuts	1 Each
K9-2600-08	Flex-a-Lite Fogger, with 48" hose	1 Each
K9-2600-TF	Flex-a-Lite Fogger with 48" hose for use in countries with 220/50 current	1 Each
HCKT-12	Zipwall® Pogo Poles for Holding Quick Connect to Ceiling, extends to 12', includes grip disks, two poles and discs per kit	1 Kit



# Replacement Parts And Accessories

## CHEMICALS

PART NO.	PRODUCT DESCRIPTION	STANDARD CASE PACKAGING
K6-4300	BBJ Mould Control® for HVAC Systems and Air Ducts, 3 Bottles/Case (one 15 oz. bottle yields 7.5 gallons of solution)	3 Bottles
AS300-1	CONCROBIUM® Mould Control 3.78L	4 Jugs/cs
BF50475	BENEFFECT® Disinfectant 4L Jug	4 Jugs/cs
K6-4900	BBJ FreshDuct Odour Eliminator®, 3 Bottles/Case (one 15 oz. bottle yields 5 gallons of solution)	3 Bottles
B101	BIO-MIGHT® 100 Coil Cleaner Concentrate, 1 gallon jug (dilute with water)	4 Jugs/cs
K6-4020	FOSTER® Fungicidal Protective Coating, 5 gallon pail	1 Pail

## DUCT-PRO® VIDEO INSPECTION SYSTEM

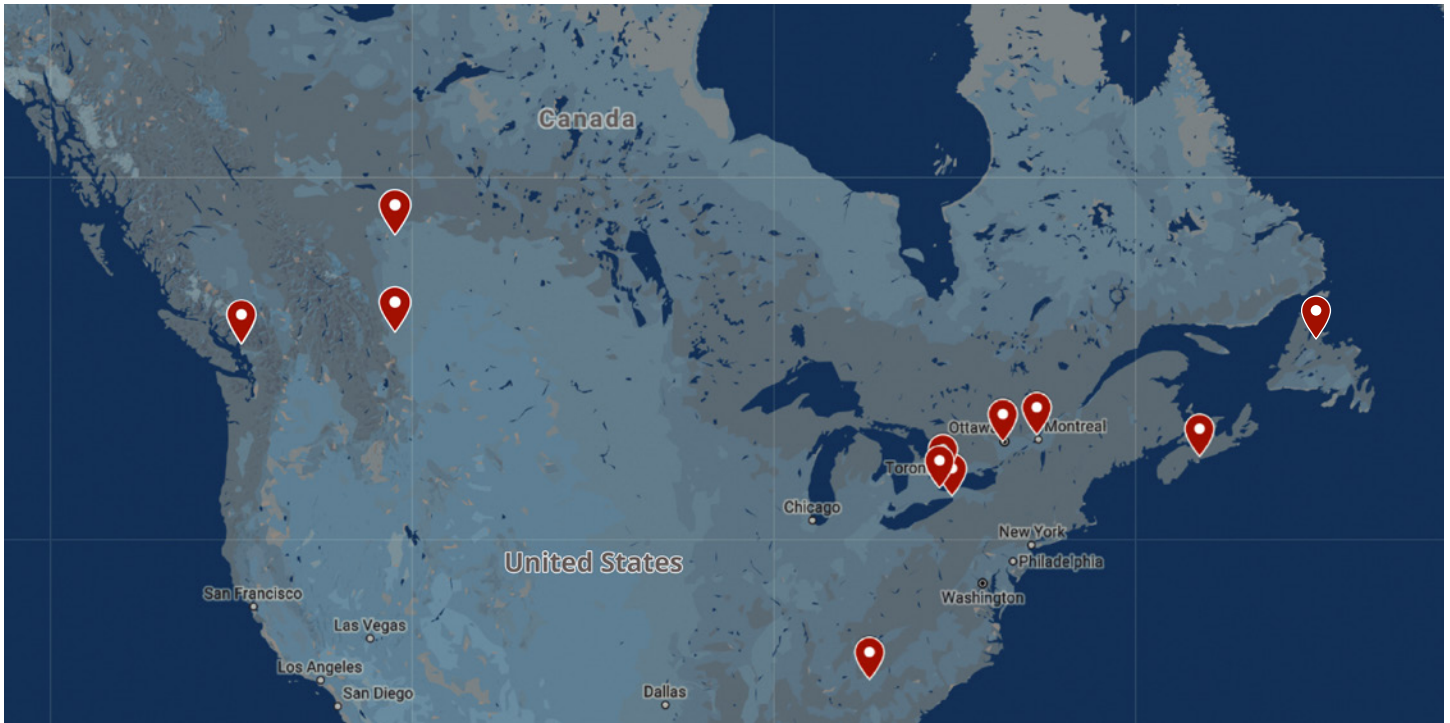
PART NO.	PRODUCT DESCRIPTION	STANDARD CASE PACKAGING
IS9000NTSC	Complete Duct Video Inspection System includes camera, carrying case, cable wheel, 9" display monitor, Li-ion battery, charger, DVR, keyboard, microphone. NTSC for North American market.	As Listed
IS9000PAL	Duct inspection tool for international market. Includes camera, case, cable wheel, display monitor, Li-ion battery, charger, DVR, keyboard, microphone. Needs PAL camera head (IS9000CPAL) and a Europe standard plug (IS9000PAL-PA).	As Listed
IS9000C	IS9000 Replacement camera head, 2 skids & wrench	1 Each
IS9000CPAL	IS9000 Replacement PAL camera head, 2 skids & wrench	1 Each
IS9000CL	20m Fiberglass Cable with connectors, chips & screws for IS9000	1 Each
IS9000W	IS9000 cable wheel only	1 Each
IS9000M	IS9000 9" monitor only	1 Each
IS9000K	Mini-keyboard only	1 Each

## HEPA VACUUM

PART NO.	PRODUCT DESCRIPTION	STANDARD CASE PACKAGING
V8000WD	8 Gallon Wet/Dry HEPA Vacuum with Tool Kit	1 Kit
V8040-5	Replacement Bags For V8000WD, 5/cs	1 Case
V8042	Replacement HEPA filter for V8000WD	1 Each

## PORTABLE HEPA VACUUMS FILTER CHART [Wet / Dry Vacuums]

FILTER OR ACCESSORY	V8000WD	GD930	GD10
Filter Bags 5 / pk	V8040-5	V93040	V1471097500
HEPA Filter, Dry Use Only	V8042	V930-10	V1471104500
HEPA Filter, Dry/Wet Use	V8042-W	NA	NA



## Main Offices

### US

Abatement Technologies, Inc.  
605 Satellite Blvd. Suite 300  
Suwanee, GA 30024  
U.S. 800-634-9091  
Intl. +01-678-889-4200  
[iaqinfo@abatement.com](mailto:iaqinfo@abatement.com)

### Canada

Abatement Technologies Limited  
7 High Street  
Fort Erie, ON L2A 3P6  
CAN. 800-827-6443  
Intl. +01-905-871-4720  
[iaqinfo@abatement.ca](mailto:iaqinfo@abatement.ca)

## Branch Offices

### Vancouver

F102-19720-94A Avenue,  
Langley BC V1M 3B7  
778-372-2611

### Edmonton

16403 - 117 Ave.  
NW Edmonton, AB T5M 3V3  
780-665-5165

### Toronto

144 Sharer Rd.  
Vaughan, ON L4L 8P4  
905-266-1322

### Calgary

F-7004 5th St. SE  
Calgary, AB T2H 2G3  
403-351-2223

### Hamilton

428 Millen Rd. Unit 10  
Stoney Creek, ON L8E 3N9  
905-664-6075

### Ottawa

51 Capital Drive  
Ottawa, ON K2G 0E7  
613-749-9667

### Montreal

1950 Bernard Lefebvre  
Laval, QC H7C 0A5  
514-375-0606

### Dartmouth

121 Ilsley Ave Unit 12  
Dartmouth, NS B3B 1J1  
902-334-0900

### St. John's

5 Maverick Place  
Paradise, NL A1L 1Y8  
709-800-9020

### Moncton

1070 St. George Blvd Unit 100  
Moncton NB E1E 4K7  
506-406-5999

1.800.827.6443

[ABATEMENT.CA](http://ABATEMENT.CA)

[IAQINFO@ABATEMENT.CA](mailto:IAQINFO@ABATEMENT.CA)

#### Compliance With Standards and Guidelines

For the past 20 years, Abatement Technologies has provided healthcare facilities with the technology they need to comply with current infection-control standards and practices in an effective and economical manner. These include guidelines developed by The Centers for Disease Control and Prevention (CDC), Health Canada, the Canadian Standards Association (CSA), the American Institute of Architects (AIA), Department of Homeland Security HRSA Critical Benchmark 2.2, and Joint Commission requirements.

© 2021, Abatement Technologies Limited. All Rights Reserved. No reproduction of any portion of this advertisement is permitted without the express written permission of Abatement Technologies Limited. All illustrations and specifications contained in this advertisement are based on the latest product information available at the time of printing. Abatement Technologies Inc. reserves the right to (1) make changes at any time, without notice, to product designs, specifications, materials, and colours, (2) to introduce new models to the marketplace and, (3) discontinue products as it sees fit. JH\_08/21