

COMPONENTS CATALOG

Helping Protect People.
Simplifying Construction.
Breathing Easier.



SHIELD WALL™
BY ABATEMENT TECHNOLOGIES®



INTRODUCTION

SHIELD WALL™ is a modular system designed to contain airborne contaminants during construction or renovation. It can also create patient isolation areas or clean rooms, preventing the entry of airborne particles. Used with an Abatement Technologies Differential Pressure Monitor and Portable Air Scrubber, this system maintains effective negative or positive pressure differentials. Furthermore, it can be configured as an anteroom, allowing passage between spaces while preserving negative pressure.

TABLE OF CONTENTS

Introduction	2
What is the SHIELD WALL™ Ideal For?	3
The Real Advantage	4
Competitive Advantage	5-6
Panels	7-9
Exhaust Panels	10
Doors	11
Panel Accessories	12
Hardware and Connectors	13
Parts List	14-15
Contact	16



Currently deployed in many major health networks
Exceeds ICRA Class 5 requirements
Premier temporary containment solution
Helps to reduce or eliminate future containment costs
System may pay for itself in as little as 3-5 uses

WHAT IS SHIELD WALL™ IDEAL FOR?

SHIELD WALL™ systems offer fast setup and adaptable configurations compared to traditional drywall.

Available in Core, Classic and Clear materials, these reusable panels feature easy connections, closed-cell foam gaskets, and self-leveling sills to reduce labor, startup time, and waste.

Ideal for creating a temporary construction/renovation barrier, SHIELD WALL™ minimizes future containment costs.



THE REAL ADVANTAGE



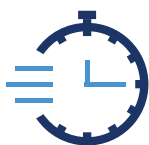
ATTRACTIVE

These sleek systems offer a professional look that adapts to any aesthetic, effectively concealing construction areas from occupied spaces better than traditional methods.



ECONOMICAL

These walls can be used repeatedly, quickly offsetting the initial investment and becoming ROI positive after just a few uses. Additional components can be purchased on an as-needed and project-design basis.



FAST

Contractors need efficient and simple containment solutions due to rising labor costs and skills shortages. A two-person crew can assemble 30 feet of linear walls in 15 to 30 minutes, saving time and money.



DURABLE

Built with extruded aluminum frames and a choice of panel materials, walls are solid and secure, with upper and lower connection points and hardware options to meet varying architectural features in the work zone.



REUSABLE

Reducing waste by eliminating landfill disposal costs is an important consideration in today's environmentally conscientious decision-making.



UNIVERSAL

Mix and match any SHIELD WALL™ components together, including other manufacturers' brands. Universal compatibility gives greater flexibility in design and installation.

SHIELD WALL™

BY ABATEMENT TECHNOLOGIES®

COMPETITIVE ADVANTAGE

DESCRIPTION	CORE	OTHER COMPETITORS
NO SPECIAL TOOLS REQUIRED	✓	
INSTALLATION HARDWARE IS INCLUDED	✓	
DOOR CLOSER AND KEY LOCKING LEVER HANDLE INCLUDED	✓	
INTERCHANGEABLE EXHAUST COLLARS	✓	
DURABLE	✓	✓
EXCEEDS ICRA CLASS V REQUIREMENTS	✓	✓
MEETS CLASS A FIRE & SMOKE RATING	✓	✓
REDUCED ENVIRONMENTAL WASTE	✓	✓
HIGHLY ENGINEERED DESIGN	✓	✓
SOUND ATTENUATION	✓	✓

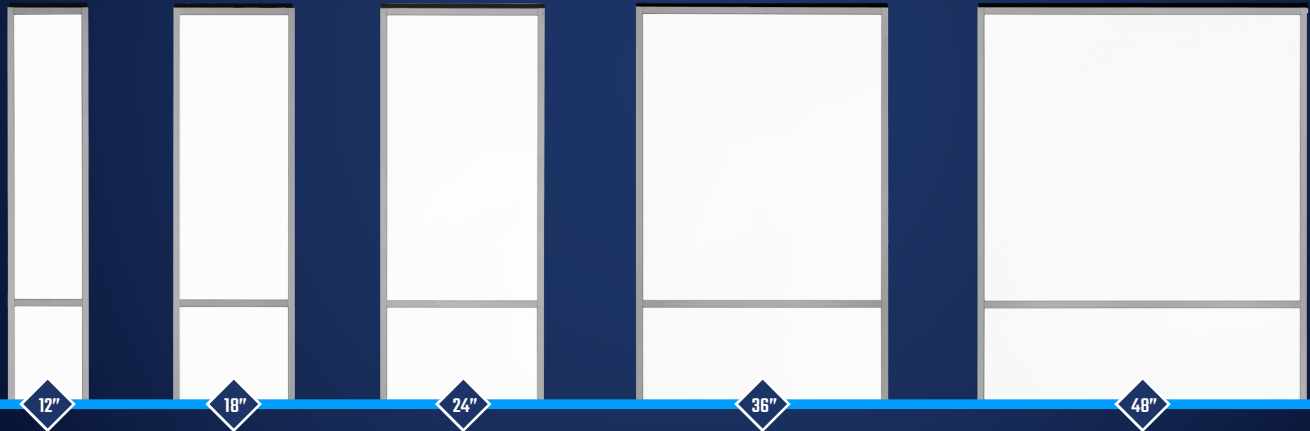
HOW WE STACK UP AGAINST OTHER PANEL SYSTEMS

COMPETITIVE ADVANTAGE

HOW
WE
STACK UP
AGAINST
OTHER
PANEL
SYSTEMS

DESCRIPTION	CLASSIC / CLEAR	OTHER COMPETITORS
NO SPECIAL TOOLS REQUIRED	✓	
INSTALLATION HARDWARE IS INCLUDED	✓	
DOOR CLOSER AND KEY LOCKING LEVER HANDLE INCLUDED	✓	
INTERCHANGEABLE EXHAUST COLLARS	✓	
PANELS AND DOORS AVAILABLE IN CLEAR MATERIAL	✓	
WINDOW KITS AVAILABLE	✓	
LIGHTWEIGHT	✓	✓
DURABLE	✓	✓
EXCEEDS ICRA CLASS V REQUIREMENTS	✓	✓
MEETS CLASS A FIRE & SMOKE RATING	✓	✓
REDUCED ENVIRONMENTAL WASTE	✓	✓
HIGHLY ENGINEERED DESIGN	✓	✓
SOUND ATTENUATION	✓	✓

OUR PANELS



CORE SPECS

Frame Construction:	Anodized Aluminum with steel screws
Panel Construction:	Painted aluminum and galvanized steel with closed-cell insulation interior
Sound Attenuation:	In 3rd party test results, the CORE PANELS reduced the noise level of an air compressor operating at 90dB at a distance of 8ft from the wall by 20dB

CLASSIC AND CLEAR SPECS

Frame Construction:	Anodized Aluminum with steel screws
Panel Construction:	Translucent polycarbonate
Sound Attenuation:	In 3rd party test results, the SHIELD WALL™ reduced the noise level of an air compressor operating at 90dB at a distance of 8ft from the wall by 17dB

SURFACE BURN CHARACTERISTICS





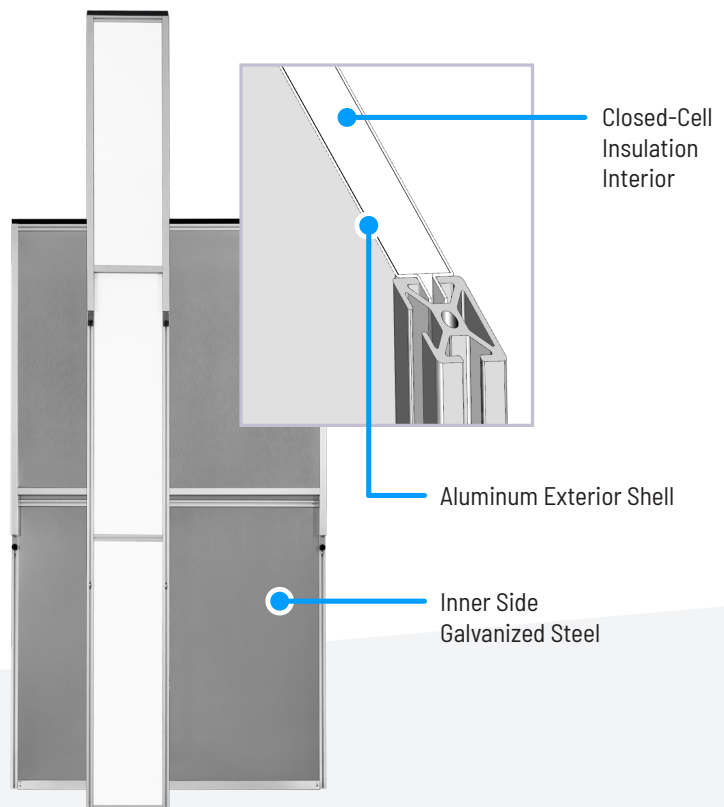
CORE PANELS

SHIELD WALL™ Core panels feature a clean white exterior and closed-cell insulation for superior noise reduction in sensitive areas.

THE CORE PANEL DIFFERENCE

This containment system, with its attractive painted white aluminum exterior, durable galvanized steel interior, and closed-cell foam core, blends seamlessly into healthcare and commercial settings while offering superior sound and thermal insulation.

- ✓ White painted aluminum exterior for a professional appearance
- ✓ Environmentally friendly, reusable design
- ✓ Quick setup and tool free height adjustment





CLASSIC & CLEAR PANELS

Our Classic and Clear panels provide effective containment while optimizing light (Classic & Clear) and visibility (Clear).



EXHAUST PORT OPTIONS

PRE-INSTALLED EXHAUST PORT FRAMES are available for 18" or 24" CORE, CLASSIC, or CLEAR panels that includes a blank security plate. Drop-in exhaust plates are available with 8", 10", 12", and 14" collars (purchased separately).

An Exhaust Frame Kit can be purchased separately along with the drop-in exhaust plate with the desired size of collar. This kit can be installed in the lower pane of any size of *panel prior to assembling the SHIELD WALL™. If ducting is needed on both sides of a panel, purchase 2 of the Exhaust Frame Kits and mirror them on either side.

*For Classic and Clear on site installations only. Please purchase factory installed Core 18" or 24" Exhaust Port Panels.

One exhaust port frame comes installed on an 18" or 24" panel

CLEAR

CLASSIC

CORE



SW-EX14

Exhaust port,
14" diameter collar



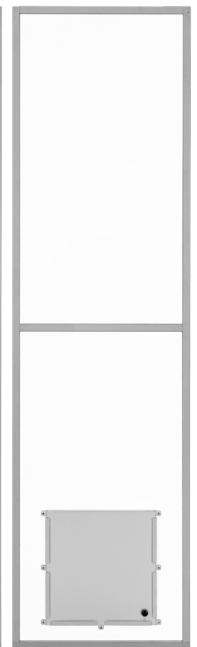
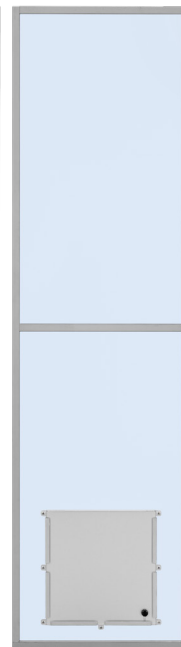
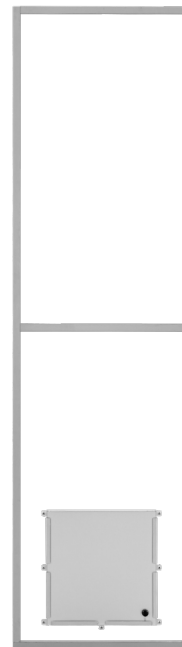
SW-EX12

Exhaust port,
12" diameter collar



SW-EX10

Exhaust port,
10" diameter collar



SW-EX08

Exhaust port,
8" diameter collar



SW-EXD

Exhaust/Intake plate with
diffuser & 2" pleated filter



SW-EXK

Exhaust Kit, Security Port
Plate & Plastic Knob. If
ducting is required on both
sides (CLASSIC & CLEAR)

When the port is not in use it can be sealed with the removable locking security plate which is included



MEASURING NEGATIVE AIR

The universal differential pressure monitor mount fastens the Portable PPM3-S, PPM-4 or Fixed Wall Mount RPM-RT series monitors to the outside or inside of panels allowing for greater flexibility in monitor placement.

DOORS

SHIELD WALL™ CORE, CLASSIC & CLEAR doors are available in multiple widths and three styles are offered: hinged, sliding, or double-hinged. All doors include an adjustable threshold and sweep. Also included are filler panels for over-the-door, allowing for flexible height adjustment to different ceiling heights up to 10' 3". New 3' height extensions are available for all sizes and styles of doors.

SLIDING DOORS

Space-saving sliding door, opens left.
Requires minimum 3' (42" door) or 4' (54" door) side panel.
Available in two widths: 42" (in a 48" panel) and 54" (in a 60" panel).
Height adjustable up to 10'3" with the included over-the-door kit.
Gravity-driven self-closing mechanism.
Removable magnetic stop.



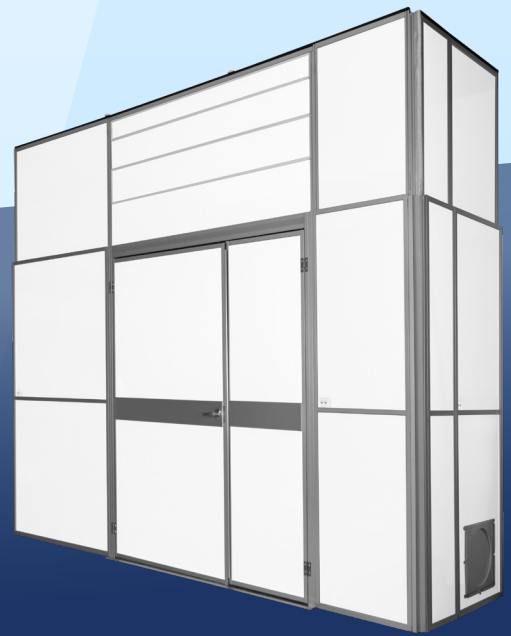
UNIVERSAL DOORS

Swings in or out, and can be hung left or right.
Available in two widths: 32" (in a 36" panel) and 44" (in a 48" panel).
Height adjustable up to 10'3" with included over-the-door kit and door closer.
Electronic digital keypad available separately.



DOUBLE-HINGED DOORS

Double hinged doors are 68" wide, set in a 72" frame.
Standard height is 84", adjustable to 10'3" with the included kit.
Primary door (with handle cutout) is 44" wide, secondary door is 24" wide.
Primary door latches into the secondary door.
Secondary door secured with top and bottom spring-loaded pins.
Doors can swing in or out.



PANEL ACCESSORIES

SHIELD WALL™ EXTENSIONS

Three foot high extension panels are available for all five widths of CORE, CLASSIC and CLEAR panels. They are also available for all doors, corners and T-Connections.

Extension panels allow for our modular system to extend from 10'3" to 13'3"



SHIELD WALL EXTENSIONS

WALL SEALS & ADAPTERS (CORE, CLASSIC AND CLEAR)

SHIELD WALL™ integrates seamlessly with existing structures. Wall seals close small gaps, and a drywall adapter allows drywall attachment for non-plumb walls or obstructions. Fixed seals handle minor obstructions, while an extension kit adjusts up to 3.25" on each side. Two adapter kits connect to other panel systems.

- Wall seals and adapters ensure a tight fit.
- Kits accommodate various gap sizes and connect to other branded wall systems.



SW-WSA



SW-WSA



SW-ADP1

CORNERS

- Flexible Hinged Universal Corner: This corner piece adjusts to create both 90° inward and 270° outward turns. Inward turns decrease the contained area, while outward turns increase it. Note that this piece adds 1" to one wall and 3" to the other.
- Fixed Inside Corner: Creates a standard 90° inward turn.
- T-Connections: Allow for 90° intersections, enabling you to branch off a wall inward or outward.
- Height Adjustability: All corners and T-connections are adjustable from 7' to 10'3". Increase the height with 3' extensions.



Fixed Corners



Universal Hinged Corners



T-Connection Outward



T-Connection Inward

WINDOW KITS*

SHIELD WALL™ window kits offer flexibility and convenience. They can be installed on CLASSIC 18", 24", 36" or 48" panels and any style of doors either before or after wall construction, in the upper panel area. Two kits are available, each containing a clear window pane, frame, and hardware:

- Standard Kit: 16.5" x 22.5" window in a 20.5" x 26.5" frame.
- Large Kit: 22" x 28" window in a 26" x 32.5" frame.

*Not compatible with SHIELD WALL™ CORE panels.



SW-WK

HARDWARE & CONNECTORS

All necessary installation hardware is included with SHIELD WALL™ panels and doors. Additional hardware packs can be purchased separately.

PANEL DROP-IN CONNECTORS

All panels and doors have factory installed drop-in connectors, however should they be removed and need to be replaced they are available to purchase in packs of 10 with screws.

PANEL CLAMPS

Panel clamps close spaces between components which may arise due to sloped floors or corners. Panel clamps can be installed inside of the lower panels or outside of the upper panels. Two panel clamps are included but additional panel clamps are available in packs of 10.

CEILING BRACKETS

Ceiling brackets attach the panels and doors to the suspended ceiling grid. Two ceiling brackets are included with each panel and door but additional ceiling brackets are available for purchase in packs of 10. Optional slim ceiling brackets for a 9/16" T-Bar are available.

FLOOR MOUNT HARDWARE

Floor mount hardware is available in packs of 10.

TRANSPORT CART

Two transport carts are available. A light-duty cart designed to transport CLASSIC and CLEAR panels (SW-CARTLD) and a heavy-duty cart for transporting CORE panels (SW-CART).

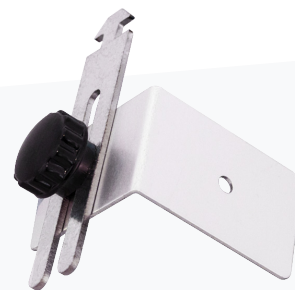
The LD cart can carry up to eight CLASSIC or CLEAR panels of any size but no more than four doors at a time. The small side can carry up to three CLASSIC or CLEAR one-foot or two-foot panels. The HD cart can hold a maximum of nine 48" components and 700 lbs (317.5 kg). Both transport carts fit through standard doors and have four swivel wheels for easy handling. Panels are secured with ratchet straps. Great for storage between projects. A dust cover may be purchased separately (SW-CART-DC). Cart assembly is required.



Floor Mount Hardware



Drop-In Connector



Drywall Ceiling Brackets



Panel Clamps



Ceiling Brackets

PARTS LIST

STANDARD PANELS	WIDTH	MIN / MAX HEIGHT	DIMENSIONS	CLASSIC PART NUMBER	CLEAR PART NUMBER	CORE PART NUMBER
12" Panel	12"	84" / 123"	12"W x 84"T x 2"D	SW-P12W	SW-P12C	SW-CORE-P12
18" Panel	18"	84" / 123"	18"W x 84"T x 2"D	SW-P18W	SW-P18C	SW-CORE-P18
24" Panel	24"	84" / 123"	24"W x 84"T x 2"D	SW-P24W	SW-P24C	SW-CORE-P24
36" Panel	36"	84" / 123"	36"W x 84"T x 2"D	SW-P36W	SW-P36C	SW-CORE-P36
48" Panel	48"	84" / 123"	48"W x 84"T x 2"D	SW-P48W	SW-P48C	SW-CORE-P48
18" Panel, White with Exhaust Port	18"	84" / 123"	18"W x 84"T x 2"D	SW-EP18W	SW-EP18C	SW-CORE-EP18
24" Panel, White with Exhaust Port	24"	84" / 123"	24"W x 84"T x 2"D	SW-EP24W	SW-EP24C	SW-CORE-EP24

3' EXTENSIONS	WIDTH	MIN / MAX HEIGHT	DIMENSIONS	CLASSIC PART NUMBER	CLEAR PART NUMBER	CORE PART NUMBER
12" Panel	12"	36"	12"W x 36"H x 2"D	SW-P12W-X3	SW-P12C-X3	SW-CORE-P12-X3
18" Panel	18"	36"	18"W x 36"H x 2"D	SW-P18W-X3	SW-P18C-X3	SW-CORE-P18-X3
24" Panel	24"	36"	24"W x 36"H x 2"D	SW-P24W-X3	SW-P24C-X3	SW-CORE-P24-X3
36" Panel	36"	36"	36"W x 36"H x 2"D	SW-P36W-X3	SW-P36C-X3	SW-CORE-P36-X3
48" Panel	48"	36"	48"W x 36"H x 2"D	SW-P48W-X3	SW-P48C-X3	SW-CORE-P48-X3

DOORS	TYPE	DETAILS	CLASSIC PART NUMBER	CLEAR PART NUMBER	CORE PART NUMBER
32" Wide	Hinged	In a 36" panel, key locking lever handle set and door closer (36"W frame X 80"H x 32W Door)	SW-D32W	SW-D32C	SW-CORE-D32
44" Wide	Hinged	In a 48" panel, key locking lever handle set and door closer (48"W frame X 80"H x 44"W Door)	SW-D44W	SW-D44C	SW-CORE-D44
42" Wide	Sliding	Self closing, 42" sliding door in a 48" panel (48"W frame X 80"H x 42"W Door)	SW-DS42W	SW-DS42C	SW-CORE-DS42
54" Wide	Sliding	Self closing, 54" sliding door in a 60" panel (60"W frame X 80"H x 54"W Door)	SW-DS54W	SW-DS54C	SW-CORE-DS54
68" Wide	Double-Hinged	In a 72" frame, a 44" Primary & 24" Secondary hinged doors, swing in or out (72" W frame x 80H x 68" W Doors)	SW-DD68W	SW-DD68C	SW-CORE-DD68
Extension 54" Wide	6" - 3' Extension	3' Extension (54" W X 36" H)	SW-DS54W-X3	SW-DS54C-X3	SW-CORE-DS54-X3
Extension 68" Wide	6" - 3' Extension	3' Extension (68" W X 36" H)	SW-DD68W-X3	SW-DD68C-X3	SW-CORE-DD68-X3

PANEL CORNERS	MIN / MAX HEIGHT	PART NUMBER
Corner, Fixed 90° Inside	84"/123"	SW-CFI
Corner, Hinged Universal	84"/123"	SW-CHU
T-Connection Outward	84"/123"	SW-TO
T-Connection Inward	84"/123"	SW-TI
Corner, Fixed 90° Inside Extension	6" - 36"	SW-CFI-X3
Corner, Hinged Universal Extension	6" - 36"	SW-CHU-X3
T-Connection Outward Extension	6" - 36"	SW-TO-X3
T-Connection Inward Extension	6" - 36"	SW-TI-X3

HARDWARE AND CONNECTORS	PART NUMBER
Shield Drop-in Panel Connectors, 10/PK	SW-HWDC10
Shield Panel Clamp, 10pk.	SW-HWPC10
Shield Ceiling Clamp, 10pk.	SW-HWCG10
Shield Ceiling Clamp Slim, 10pk.	SW-HWCG10S
Hardware Floor Bracket, 10/pk	SW-HWFB10
Ceiling Bracket for Drywall, 10/pk	SW-HWCD10

WALL SEALS & ADAPTERS	PART NUMBER
Wall Seal Extension Kit - LH & RH Extends up to 3.5"	SW-WSA
Wall Seal Kit, Extended - For Drywall	SW-WSED
Wall Seal 3" Extended, Metal with Foam - L & R	SW-WSE3
Adapter - Connect SHIELD WALL™ Panels to Other System Panels	SW-ADP1
Adapter - Connect SHIELD WALL™ Panels to Other System Panels	SW-ADP2

OTHER ACCESSORIES	PART NUMBER
Locking Door Lever with Keypad + Closer + Hardware	SW-HDWRDP
Standard Lever Door Handle with Hardware	SW-HDWRD
Window Kit Standard 24" (ONLY FOR CLASSIC & CLEAR)	SW-WK
Window Kit Large 36" (ONLY FOR CLASSIC & CLEAR)	SW-WKL
Shield Transport Cart Heavy Duty	SW-CART
Shield Transport Cart Light Duty	SW-CARTLD
Pressure Monitor Universal Hanger	SW-HWPMUK
Closed Cell Gasket, 8ft length	TAPE46
Free-standing Support Post	SW-FSP
Corner Brace	SW-HWCB
Door Handle Crash Bar Kit	SW-DHCBK
Ceiling Strut	SW-HWCS
2x4 Joist Hanger Brackets	SW-HWJH

EXHAUST PORTS	COLLAR SIZE	DIMENSIONS	PART NUMBER
8" Exhaust Plate	8"	15"W x 15"T x 3"D	SW-EX08
10" Exhaust Plate	10"	15"W x 15"T x 3"D	SW-EX10
12" Exhaust Plate	12"	15"W x 15"T x 3"D	SW-EX12
14" Exhaust Plate	14"	15"W x 15"T x 3"D	SW-EX14

EXHAUST PORT KITS	DIMENSIONS	PART NUMBER
Exhaust Kit, 2 Frames with Security Plate and Plastic Knob	16.5"W x 16.5"T x 2"D	SW-EXK
Exhaust / Intake Plate with Diffuser and 2" Pleated Filter	20"W x 20"T x 3"D	SW-EXD



For more than 40 years
companies around
the world have
relied on Abatement
Technologies for HEPA
filtration systems
and other indoor
air quality products
with industry-leading
quality, performance
and reliability.

WHO WE ARE

Infection control is a top priority in hospital construction. With over 40 years of experience designing and manufacturing healthcare equipment, *we're passionate about clean air*. Our Abatement product line includes negative air machines, air scrubbers, patient isolation systems, pressure monitors, and mobile containment carts.

SHIELD WALL™ is a natural extension of our commitment to controlling dust and airborne pathogens in critical care environments, protecting patients, staff, and visitors. We're dedicated to providing outstanding customer service and technical support for all our products.

Our expert staff can help you choose the right equipment for your needs.

Contact us today for all your construction containment solutions.



MAIN OFFICES

ABATEMENT TECHNOLOGIES US
605 Satellite Blvd. Suite 300
Suwanee, GA 30024
US 800-634-9091
Intl. +01-678-889-4200
iaqinfo@abatement.com

ABATEMENT TECHNOLOGIES CA
1481 Harbor Court
Fort Erie, ON L2A 0G3
CAN. 800-827-6443
Intl. +01-905-871-4720
iaqinfo@abatement.ca

1.800.634.9091

ABATEMENT.COM

SHIELDWALLSYSTEMS.COM

SHIELD WALL™

COMPONENTS CATALOG

Compliance with Standards and Guidelines

For the past 20 years, Abatement Technologies has provided health care facilities with the technology they need to comply with current infection-control standards and practices in an effective and economical manner. These include guidelines developed by the Centers for Disease Control and Prevention (CDC), Health Canada, the Canadian Standards Association (CSA), the American Institute of Architects (AIA), Department of Homeland Security HRSA Critical Benchmark 2.2, and Joint Commission requirements.

© 2025, Abatement Technologies, Inc. All Rights Reserved. No reproduction of any portion of this advertisement is permitted without the express written permission of Abatement Technologies, Inc. All illustrations and specifications contained in this advertisement are based on the latest product information available at the time of printing. Abatement Technologies reserves the right to (1) make changes at any time, without notice, to product designs, specifications, materials and colors, (2) to introduce new models to the marketplace and, (3) discontinue products as it sees fit. SHIELD WALL CATALOG 04_25