



SHIELD WALL™ ***COMPONENTS CATALOGUE***

Temporary, reusable modular wall system for dust control
during construction and renovation in critical care environments



INTRODUCTION

The SHIELD WALL™ is a modular wall system designed to contain airborne contaminants while performing construction or renovation work. The wall system can also be used as a patient isolation area or clean room to prevent airborne contaminants from entering. When used properly in conjunction with an Abatement Technologies Differential Pressure Monitor and a Portable Air Scrubber, the SHIELD WALL™ maintains negative or positive pressure differentials. Additionally, the SHIELD WALL™ can be used to build an anteroom to allow passage between rooms while maintaining negative pressure differentials.

TABLE OF CONTENTS

Introduction	2
What is the SHIELD WALL™ Ideal For?	3
The Real Advantage	4
Competitive Advantage	5, 6
All About SHIELD WALL™ Panels	7-9
All About Exhaust Panels	10
All About SHIELD WALL™ Doors	11
Panel Accessories	12
Hardware and Connectors	13
SHIELD WALL™ Parts List	14, 15
Contact	16



Currently deployed in many major health networks
Exceeds ICRA Class 5 requirements
Premier temporary containment solution
Helps to reduce or eliminate future containment costs
System may pay for itself in as little as 3-5 uses

CA: 1.800.827.6443 • ABATEMENT.CA

“ We used the containment for an emergency job this morning and it has worked perfectly. We had a temporary poly containment fail due to water getting at the tape and your system has now gone up and it doesn't care about water at all.

-JASON S. Facility Manager

WHAT IS SHIELD WALL™ IDEAL **FOR?**

Compared to the time required to cut and install drywall, the **SHIELD WALL™** is erected quickly, can adapt to multiple configurations, and is available in three different materials to meet specific requirements.

CLASSIC, CLEAR and CORE SHIELD WALL™ are innovations in containment and are becoming the standard, as contractors are able to reduce labour and startup times through easy to connect panels, closed cell foam gaskets, and self-levelling floor sills. Ideal for creating a temporary barrier around a construction or renovation area, all SHIELD WALL™ materials can be re-used eliminating waste and future containment costs.

SHIELD WALL™

ABATEMENT TECHNOLOGIES



SHIELD WALL™ THE REAL ADVANTAGE



QUICK, EASY AND VIRTUALLY DUST FREE

With a modular design, drop in connectors and no tool assembly the SHIELD WALL™ system will get you started with less labour, less time, and virtually no dust



EXQUISITE DESIGN

CLASSIC or CLEAR Polycarbonate, and CORE SHIELD WALL™ panels and doors give any site a clean professional, high-end image



LEVEL SURFACE

The innovative drop in connector hardware combined with our unique levelling plates allows for up to one inch of play that helps your containment to stay sealed in uneven environments



BUDGET AND ENVIRONMENTALLY FRIENDLY

All SHIELD WALL™ components are reusable and don't create waste, compounding material savings over time



ADAPTABLE DESIGN FOR EVERY JOB

5 panel sizes, hinged or sliding doors, fixed or flexible corners and a choice of three pane materials equates to containment that can meet different demands with our CLEAR, CLASSIC and CORE options



EASY DECONTAMINATION

With smooth surfaces that are resistant to in-depth hospital cleaning practices it is easy to decontaminate before, during, and after construction



SECURE ENVIRONMENT

Lockable doors and exhaust plates, as well as, hidden panel connectors ensure that SHIELD WALL™ creates a protective and secure barrier around your site



ICRA COMPLIANCE

Easily create ICRA compliance up to Class 5

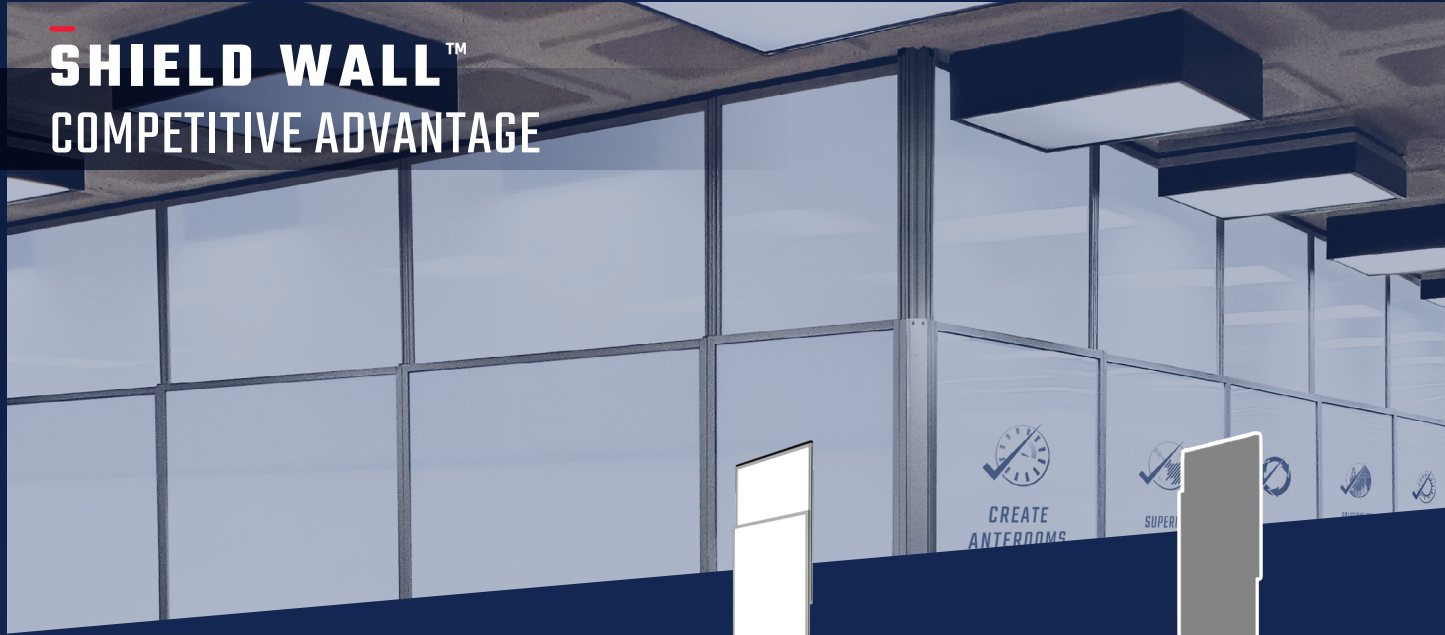
SHIELD WALL™ COMPETITIVE ADVANTAGE

HOW
WE
STACK UP
AGAINST
OTHER
PANEL
SYSTEMS

DESCRIPTION	CLASSIC / CLEAR	OTHER COMPETITORS
NO SPECIAL TOOLS REQUIRED	✓	
INSTALLATION HARDWARE IS INCLUDED	✓	
DOOR CLOSER AND KEY LOCKING LEVER HANDLE INCLUDED	✓	
INTERCHANGEABLE EXHAUST COLLARS	✓	
PANELS AND DOORS AVAILABLE IN CLEAR MATERIAL	✓	
WINDOW KITS AVAILABLE	✓	
LIGHTWEIGHT	✓	✓
DURABLE	✓	✓
EXCEEDS ICRA CLASS V REQUIREMENTS	✓	✓
MEETS CLASS A FIRE & SMOKE RATING	✓	✓
REDUCED ENVIRONMENTAL WASTE	✓	✓
HIGHLY ENGINEERED DESIGN	✓	✓
SOUND ATTENUATION	✓	✓

SHIELD WALL™

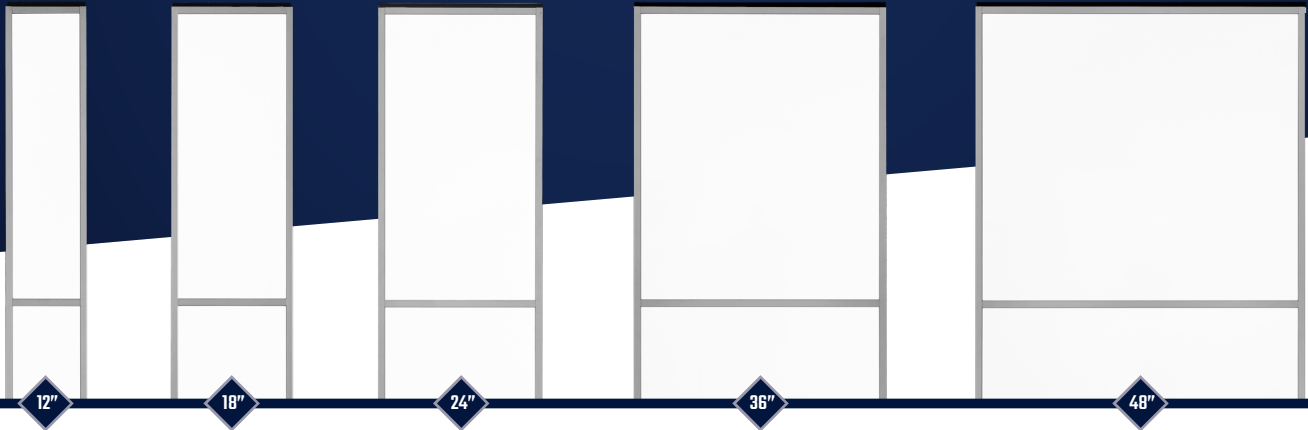
COMPETITIVE ADVANTAGE



DESCRIPTION	CORE	OTHER COMPETITORS
NO SPECIAL TOOLS REQUIRED	✓	
INSTALLATION HARDWARE IS INCLUDED	✓	
DOOR CLOSER AND KEY LOCKING LEVER HANDLE INCLUDED	✓	
INTERCHANGEABLE EXHAUST COLLARS	✓	
DURABLE	✓	✓
EXCEEDS ICRA CLASS V REQUIREMENTS	✓	✓
MEETS CLASS A FIRE & SMOKE RATING	✓	✓
REDUCED ENVIRONMENTAL WASTE	✓	✓
HIGHLY ENGINEERED DESIGN	✓	✓
SOUND ATTENUATION	✓	✓



ALL ABOUT SHIELD WALL™ PANELS



CLASSIC AND CLEAR SPECS

Frame Construction:	Anodized Aluminum with steel screws
Panel Construction:	Translucent polycarbonate
Sound Attenuation:	In third party test results, the SHIELD WALL™ reduced the noise level of an air compressor operating at 90dB at a distance of 8ft from the wall by 17dB

CORE SPECS

Frame Construction:	Anodized Aluminum with steel screws
Panel Construction:	Painted aluminum and galvanized steel with closed-cell insulation interior
Sound Attenuation:	In third party test results, the CORE PANELS reduced the noise level of an air compressor operating at 90dB at a distance of 8ft from the wall by 20dB

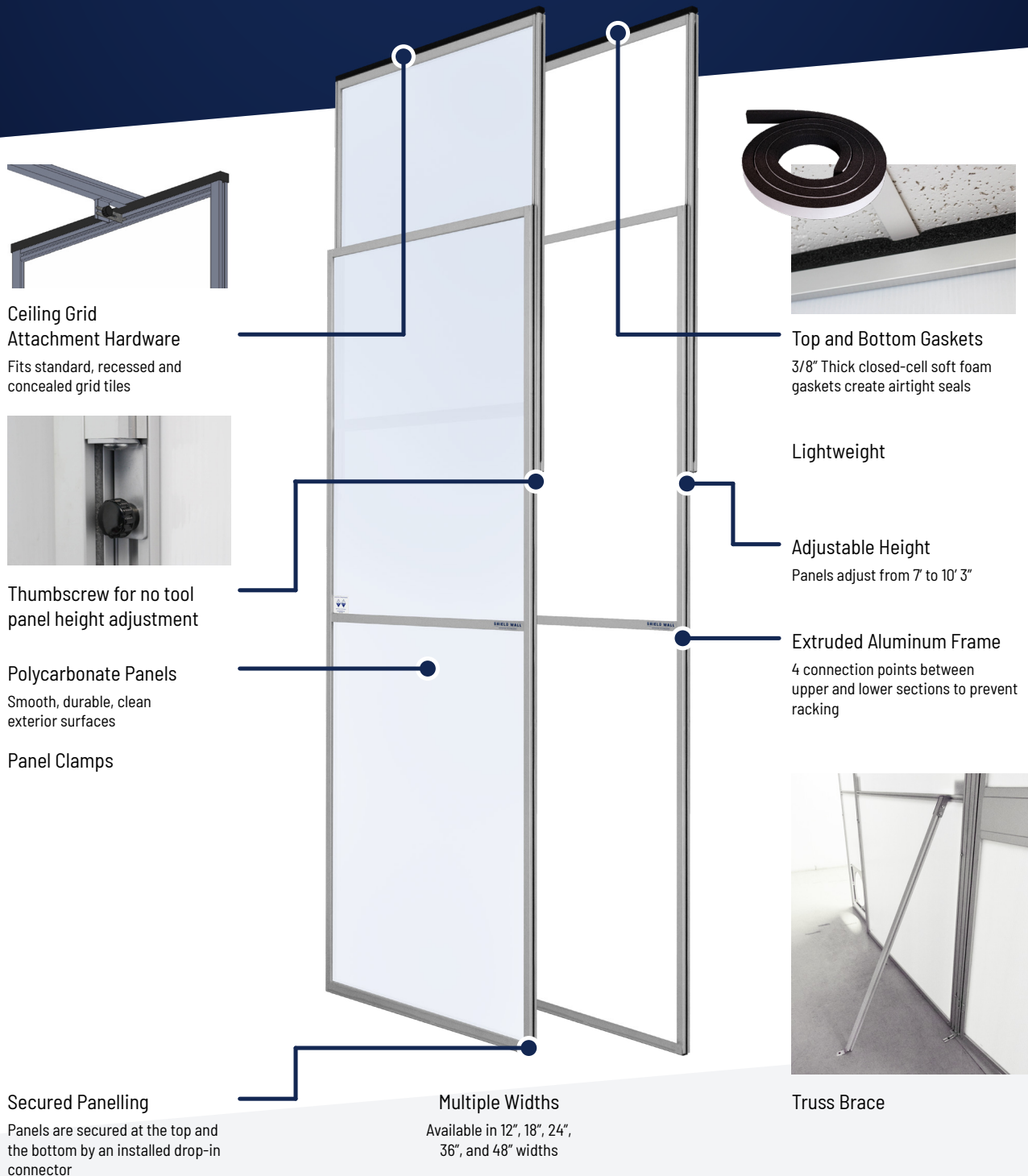
SURFACE BURN CHARACTERISTICS





ALL ABOUT **SHIELD WALL™** PANELS CLASSIC AND CLEAR

All SHIELD WALL™ components (Classic, Clear, and Core) are interchangeable and compatible without the need for any special adaptors. CLEAR panels may be combined with CLASSIC Panels, for example a CLEAR top panel and a bottom CLASSIC panel. Talk to your sales consultant about custom orders.





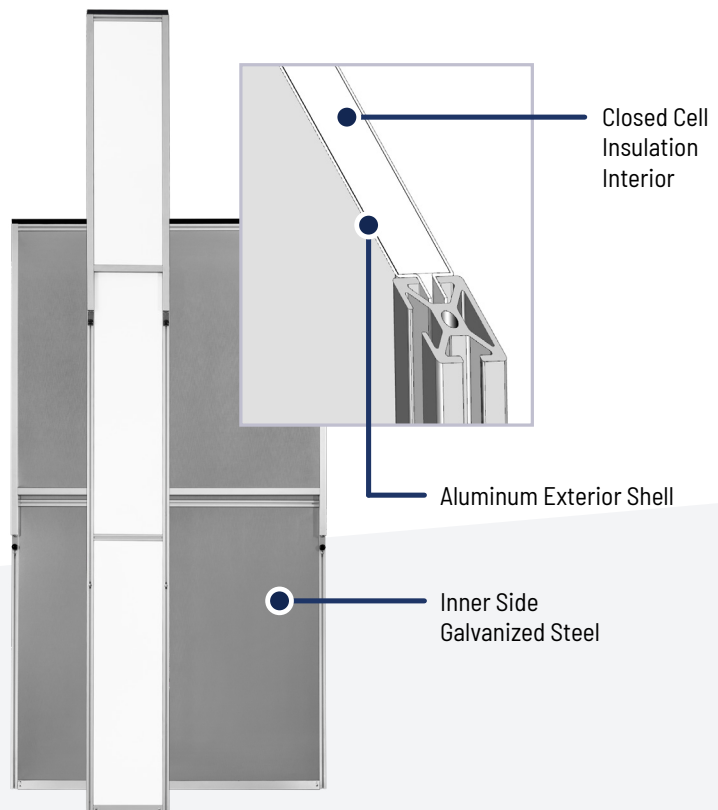
ALL ABOUT **SHIELD WALL™** PANELS CORE

All SHIELD WALL® components (Classic, Clear, and Core) are interchangeable and compatible without the need for any special adaptors.

THE **CORE PANEL** DIFFERENCE

Constructed of an attractive white aluminum exterior, durable galvanized steel interior, and a closed-cell foam core, this is a containment system that blends into healthcare settings and provides *enhanced* sound attenuation and thermal properties over other containment solutions.

- ✓ **Clean painted exterior for a professional, high end appearance**
- ✓ **Environmentally friendly, reusable design**
- ✓ **Quick setup and tool free height adjustment**





SHIELD WALL™ EXHAUST PORT OPTIONS

PRE-INSTALLED EXHAUST PORT FRAMES are available for any 2' CLASSIC, CLEAR or CORE panel that includes a blank security plate. Drop in exhaust plates are available with 8", 10" and 12" collars (purchased separately).

An Exhaust Frame Kit can be purchased separately along with the drop in exhaust plate with the desired size of port collar. This kit can be installed in the lower pane of any size of *panel prior to assembling the SHIELD WALL™. If ducting is needed on both sides of a panel, purchase two of the Exhaust Frame Kits and mirror them on either side.

*For CLASSIC AND CLEAR ON-SITE installations only

**For CORE SHIELD WALL™, please purchase a factory installed 2 foot Exhaust Port Panel as it is not possible to install a custom exhaust port in SHIELD WALL™ CORE panels.



SW-EX12

Exhaust port,
12" diameter collar



SW-EX08

Exhaust port,
8" diameter collar



SW-EX10

Exhaust port,
10" diameter collar



SW-EXD

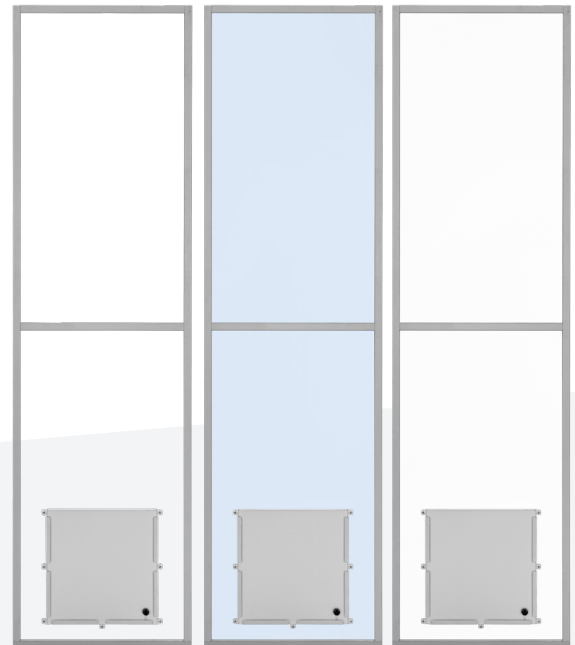
Exhaust/Intake plate with
diffuser & 2" pleated filter

One exhaust port frame comes installed
on a 2' panel

CLEAR

CLASSIC

CORE



When the port is not in use it can be sealed
with the removable locking security plate
which is included

MEASURING NEGATIVE AIR

The universal differential pressure monitor mount fastens the Portable PPM3-S or Fixed Wall Mount RPM-RT series monitors to the outside or inside of panels allowing for greater flexibility in monitor placement.

Hardware Pressure Monitor Universal Kit





ALL ABOUT SHIELD WALL™ DOORS

SHIELD WALL™ CORE, CLASSIC & CLEAR doors are available in multiple widths and three styles are offered: hinged, sliding, or double-hinged. All doors include an adjustable threshold and sweep. Also included are filler panels for over-the-door, allowing for flexible height adjustment to different ceiling heights up to 10' 3".

SLIDING DOORS

An excellent option where space is limited.

Slides open to the left (from the outside) and requires a minimum 3' (42" door) or 4' panel (54" door) installed to the left.

Available in two widths: 42" wide set in a 48" panel or 54" wide set in a 60" panel, both height adjustable up to 10' 3" with the included over-the-door kit.

Features a gravity driven self closing mechanism and a magnet stop that may be removed.

UNIVERSAL DOORS

Swing in or out, and can be hung left or right.

The 32" wide door is pre-hung in a 36" panel and the 44" wide door is set in a 48" panel.

Both doors are adjustable up to 10' 3" with the included over-the-door kit and door closer.

An electronic digital keypad may be purchased separately for hinged doors.

DOUBLE-HINGED DOORS

Double hinged doors are 68" wide and set in a 72" frame.

The double door assembly is 84" high but adjustable up to 10' 3" with the included over-the-door kit.

The primary door with door handle cut out is 44" wide and the secondary door is 24" wide.

The primary door latches into the secondary door via the latch bolt.

The secondary door is secured at the top and bottom with spring loaded pins.

Both doors can be hung to swing in or out.





SHIELD WALL™ PANEL ACCESSORIES

SHIELD WALL™ Extensions

Three foot high extension panels are available for all five widths of CLASSIC, CLEAR and CORE panels.



SHIELD WALL EXTENSIONS

Extension panels allow for our modular system to extend from 10'3" to 13'3"

Wall Seals & Adaptors (CLASSIC, CLEAR AND CORE)

Wall seals can be used to create a small extension to fill gaps between an existing wall and the SHIELD WALL™. The Drywall adaptor can be used to attach a section of drywall to the panel system to accommodate non-plumb walls or other protrusions such as handrails, pipes and large molding. Fixed Wall Seals abut against walls with obstructions 0.5" or less such as thin molding. The Wall Seal Extension Kit has both a left and right side extension that can extend up to 3.25" allowing for flexible adjustment. We also manufacture an adaptor kit that includes a left and right adaptor to connect to other system panels.



SW-WSA



SW-WSED



SW-ADP1

Corners

The flexible hinged universal corner will change the wall path 90° (inward) and 270° (outward). When used as an inside corner it changes the path inwards towards the containment area and decreases the containment area. When used as an outside corner it changes the path outwards away from the containment area and increases the containment area. Hinged corners will add an additional 1" of length to one wall and 3" of length to the other. The fixed inside corner changes the wall path 90°. T-Connections create an intersection in a wall allowing you to T-off that wall 90° with another panel either outward or inward. All Corners and T-Connections are height adjustable from 7' to 10' 3".



T-Connection
Outward



Fixed Corners



T-Connection
Inward



Universal Hinged Corners

Window Kits*

A window kit can be installed on a CLASSIC or CLEAR panel or door before or after the wall is built. It can be installed on any 2', 3' or 4' panel or door in the upper panel area. Two kits are available and include the clear window pane, a frame, a template and all installation hardware. The standard window kit is a 16.5" x 22.5" window in a 20.5" x 26.5" frame. The large window kit is a 22" x 28" window set in a 26" x 32.5" frame.

*Not compatible with SHIELD WALL™ CORE panels.



SW-WK



SHIELD WALL™ HARDWARE AND CONNECTORS

All necessary installation hardware is included with SHIELD WALL™ panels and doors.
Additional hardware packs can be purchased separately.

Panel Drop-in Connectors

All panels and doors have factory installed drop in connectors, however should they be removed and need to be replaced they are available to purchase in packs of 10 with screws.

Panel Clamps

Panel clamps close spaces between components which may arise due to sloped floors or corners. Panel clamps can be installed inside of the lower panels or outside of the upper panels. Two panel clamps are included but additional panel clamps are available in packs of 10.

Ceiling Brackets

Ceiling brackets attach the panels and doors to the suspended ceiling grid. Two ceiling brackets are included with each panel and door but additional ceiling brackets are available for purchase in packs of 10.

Floor Mount Hardware

The bottom drop in connector will have to be removed in order to use this four finger bracket for floor mount configuration. Floor mount hardware is available in packs of 10.

Transport Cart

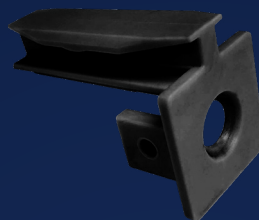
The transport cart fits through standard doors and has four swivel wheels for easy handling. Panels are secured with ratchet straps. The large side of the cart can carry up to a total of eight CLASSIC OR CLEAR panels of any size but no more than four doors at a time. The small side can carry up to three CLASSIC or CLEAR 1' or 2' panels. Great for storage between projects. (The transport cart must be assembled)



SW-CART2



Floor Mount Hardware



Drop-In Connector



Drywall Ceiling Brackets



Panel Clamps



Ceiling Brackets



Shims

SHIELD WALL™

PARTS LIST

STANDARD PANELS	WIDTH	MIN / MAX HEIGHT	DIMENSIONS	CLASSIC PART NUMBER	CLEAR PART NUMBER	CORE PART NUMBER
12" Panel	12"	84" / 123"	12"W x 84"T x 2"D	SW-P12W	SW-P12C	SW-CORE-P12
18" Panel	18"	84" / 123"	18"W x 84"T x 2"D	SW-P18W	SW-P18C	SW-CORE-P18
24" Panel	24"	84" / 123"	24"W x 84"T x 2"D	SW-P24W	SW-P24C	SW-CORE-P24
36" Panel	36"	84" / 123"	36"W x 84"T x 2"D	SW-P36W	SW-P36C	SW-CORE-P36
48" Panel	48"	84" / 123"	48"W x 84"T x 2"D	SW-P48W	SW-P48C	SW-CORE-P48
24" Panel, White with Exhaust Port	24"	84" / 123"	24"W x 84"T x 2"D	SW-EP24W	SW-EP24C	SW-CORE-EP24

3' EXTENSIONS	WIDTH	MIN / MAX HEIGHT	DIMENSIONS	CLASSIC PART NUMBER	CLEAR PART NUMBER	CORE PART NUMBER
12" Panel	12"	36"	12"W x 36"H x 2"D	SW-P12W-X3	SW-P12C-X3	SW-CORE-P12-X3
18" Panel	18"	36"	18"W x 36"H x 2"D	SW-P18W-X3	SW-P18C-X3	SW-CORE-P18-X3
24" Panel	24"	36"	24"W x 36"H x 2"D	SW-P24W-X3	SW-P24C-X3	SW-CORE-P24-X3
36" Panel	36"	36"	36"W x 36"H x 2"D	SW-P36W-X3	SW-P36C-X3	SW-CORE-P36-X3
48" Panel	48"	36"	48"W x 36"H x 2"D	SW-P48W-X3	SW-P48C-X3	SW-CORE-P48-X3

DOORS	TYPE	DETAILS	CLASSIC PART NUMBER	CLEAR PART NUMBER	CORE PART NUMBER
32" Wide	Hinged	In a 36" panel, key locking lever handle set and door closer (36"W frame X 80"H x 32"W Door)	SW-D32W	SW-D32C	SW-CORE-D32
44" Wide	Hinged	In a 48" panel, key locking lever handle set and door closer (48"W frame X 80"H x 44"W Door)	SW-D44W	SW-D44C	SW-CORE-D44
42" Wide	Sliding	Self closing, 42" sliding door in a 48" panel (48"W frame X 80"H x 42"W Door)	SW-DS42W	SW-DS42C	SW-CORE-DS42
54" Wide	Sliding	Self closing, 54" sliding door in a 60" panel (60"W frame X 80"H x 54"W Door)	SW-DS54W	SW-DS54C	SW-CORE-DS54

PANEL CORNERS	MIN / MAX HEIGHT	PART NUMBER
Corner, Fixed 90° Inside	84"/123"	SW-CFI
Corner, Hinged Universal	84"/123"	SW-CHU
T-Connection Outward	84"/123"	SW-TO
T-Connection Inward	84"/123"	SW-TI

HARDWARE AND CONNECTORS	PART NUMBER
Shield Drop In Panel Connectors, 10/PK	SW-HWDC10
Shield Panel Clamp, 10pk.	SW-HWPC10
Shield Ceiling Clamp, 10pk.	SW-HWCG10
Shield Ceiling Clamp Slim, 10pk.	SW-HWCG10S
Hardware Floor Bracket, 10/pk	SW-HWFB10
Ceiling Bracket for Drywall, 10/pk	SW-HWCD10
Shield Panel Bracket, 10/pk (Original 4 finger design)	SW-HWPB10
Shield Height Shims 30/pk (Original design)	SW-HWS30

WALL SEALS & ADAPTERS	PART NUMBER
Wall Seal Extension Kit - LH & RH Extends up to 3.5"	SW-WSA
Wall Seal Kit, Extended - For Drywall	SW-WSED
Wall Seal 3" Extended, Metal with Foam - L & R	SW-WSE3
Adapter - Connect SHIELD WALL™ Panels to other system panels	SW-ADP1

OTHER ACCESSORIES	PART NUMBER
Locking Door Lever with Keypad + Closer + Hardware	SW-HDWRDP
Standard Lever Door Handle with Hardware	SW-HDWRD
Window Kit Standard 24" (ONLY FOR CLASSIC & CLEAR)	SW-WK
Window Kit Large 36" (ONLY FOR CLASSIC & CLEAR)	SW-WKL
Shield Transport Cart	SW-CART2
Pressure Monitor Universal Hanger	SW-HWPMUK
Closed Cell Gasket, 8ft length	TAPE46

EXHAUST PORTS	COLLAR SIZE	DIMENSIONS	PART NUMBER
8" Exhaust Plate	8"	15"W x 15"T x 3"D	SW-EX08
10" Exhaust Plate	10"	15"W x 15"T x 3"D	SW-EX10
12" Exhaust Plate	12"	15"W x 15"T x 3"D	SW-EX12

EXHAUST PORT KITS	DIMENSIONS	PART NUMBER
Exhaust Kit, 2 Frames with Security Plate and Plastic Knob	16.5"W x 16.5"T x 2"D	SW-EXK
Exhaust / Intake Plate with Diffuser and 2" Pleated Filter	20"W x 20"T x 3"D	SW-EXD

For more than 35 years
companies around
the world have
relied on Abatement
Technologies® for HEPA
filtration systems
and other indoor
air quality products
with industry-leading
quality, performance
and reliability.

WHO WE ARE

Infection control and reducing healthcare associated infections (HAI's) have become a central concern in hospital construction environments. Our passion is clean air and we have been designing and manufacturing equipment for healthcare facilities for over 35 years. Our vast portfolio of Abatement Branded products includes; negative air machines, air scrubbers, patient isolation systems, pressure differential monitors, and mobile containment carts to name just a few.

The development of the SHIELD WALL™ was a natural extension of our desire to help control dust and the potential release of airborne pathogens into the air in critical care environments, posing a risk to patients, staff and visitors. We are dedicated to providing the best in customer service and technical support for all of our products. Let us help you with all of your construction containment needs.

Our experienced and professional staff are dedicated to providing exceptional customer service and technical support.

Knowledgeable sales representatives can help you select the right equipment for your specific application.



MAIN OFFICES

Abatement Technologies US
605 Satellite Blvd. Suite 300
Suwanee, GA 30024
US 800-634-9091
Intl. +01-678-889-4200
iaqinfo@abatement.com

Abatement Technologies CA
1481 Harber Court
Fort Erie, ON L2A 0G3
CAN. 800-827-6443
Intl. +01-905-871-4720
iaqinfo@abatement.ca

